

*Office Star Products* | 2012  
*Atlanta In Stock Brochure & Pricer*



# Table of Contents

Contents Brochure  
pages 4-31

<b>SPACE Seating</b> .....	<b>4-9</b>
<b>OSP Hospitality</b> .....	<b>10-11</b>
<b>OSP Lounge</b> .....	<b>12</b>
<b>OSP Casegoods</b> .....	<b>13-14</b>
<b>OSP Metal</b> .....	<b>15-16</b>
<b>ProLine II</b> .....	<b>17-20</b>
<b>Work Smart</b> .....	<b>21-29</b>
<b>Resin</b> .....	<b>30-31</b>

Wall Street Lounge: WST51A, WST51LF, WST51N, WST51RF  
See pages 21 (brochure), 50-51 (price list)



**SPACE Seating . . . . . 32-36**

**OSP Hospitality . . . . . 37**

**OSP Lounge . . . . . 38**

**OSP Casegoods . . . . . 36**

**OSP Metal . . . . . 40-42**

**ProLine II . . . . . 43-46**

**Work Smart . . . . . 47-54**

**Resin . . . . . 54-55**



# SPACE seating



- 529-3R2N1F5 | P/L #34**
- R2 SpaceGrid® back
  - Mesh seat
  - Nylon flip arms
  - 2-to-1 synchro tilt
  - Heavy duty nylon base

- 529-4R2N1F5 | P/L #35**
- R2 SpaceGrid® back
  - Leather seat
  - Nylon flip arms
  - 2-to-1 synchro tilt
  - Heavy duty nylon base

- 529-R22N1F5 | P/L #35**
- R2 SpaceGrid® back & seat
  - Nylon flip arms
  - 2-to-1 synchro tilt
  - Heavy duty nylon base



Nylon flip arms



- 75-37A773♦ | P/L #34**
- Air Grid® back
  - Mesh seat
  - 2-way adjustable arms
  - Mid pivot knee tilt
  - Gunmetal finish base
  - 400 lb weight limit



- 75-47A773♦ | P/L #34**
- Air Grid® back
  - Leather seat
  - 2-way adjustable arms
  - Mid pivot knee tilt
  - Gunmetal finish base
  - 400 lb weight limit



**829-R22C728P** | P/L #36

- Charcoal DuraFlex with Flow Thru Technology® back & seat
- Height adjustable arms
- Self adjusting 4-to1 synchro tilt
- Gunmetal finish base

**829-R11C628P** | P/L #36

- White DuraFlex with Flow Thru Technology® back & seat
- Height adjustable arms
- Self adjusting 4-to1 synchro tilt
- Platinum finish base



**818A-41P91C1C3** | P/L #35

- Breathable mesh back
- Leather seat
- Cantilever arms
- Ultra 2-to-1 with seat slider
- Angled polished aluminum finish base



**818-31G9C18P** | P/L #35

- Breathable mesh back
- Mesh seat
- Height adjustable arms
- Ultra 2-to-1 with seat slider
- Angled gunmetal finish base



**818-11G9C18P** | P/L #35

- Breathable mesh back & seat
- Height adjustable arms
- Ultra 2-to-1 with seat slider
- Angled gunmetal finish base



**818-41G9C18P** | P/L #35

- Breathable mesh back
- Leather seat
- Height adjustable arms
- Ultra 2-to-1 with seat slider
- Angled gunmetal finish base



**5560♦ | P/L #33**

- Air Grid® back & seat
- Height adjustable arms
- 2-to-1 synchro tilt
- Angled nylon base



**5700♦ | P/L #34**

- Air Grid® back
- Leather seat
- Height adjustable arms
- 2-to-1 synchro tilt
- Angled nylon base



**335-47P918P♦ | P/L #34**

- Air Grid® back
- Leather seat
- Height adjustable arms
- 2-to-1 synchro tilt
- Angled polished aluminum base



**57906♦ | P/L #34**

- Air Grid® back
- Leather seat
- Height adjustable arms
- 2-to-1 synchro tilt
- Adjustable headrest
- Angled nylon base



**5505♦ | P/L #33**

- Air Grid® back
- Mesh seat
- Fixed T arms
- Black finish sled base



**5500♦ | P/L #33**

- Air Grid® back
- Mesh seat
- Height adjustable arms
- 2-to-1 synchro tilt
- Angled nylon base



**55403♦ | P/L #33**

- Air Grid® back
- Mesh seat
- Height adjustable arms
- 2-to-1 synchro tilt
- Adjustable headrest
- Angled nylon base



**5540♦ | P/L #33**

- Air Grid® back
- Mesh seat
- Height adjustable arms
- 2-to-1 synchro tilt
- Angled nylon base



**13-V44N1WA** ♦ | P/L #32  
Charcoal VeraFlex®

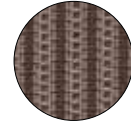
### VeraFlex® Series

- VeraFlex® back & seat
- 2-to-1 synchro tilt
- 2-way adjustable arms
- Angled nylon base

### VeraFlex® Series Color Options



**13-V44N1WA** ♦  
Charcoal VeraFlex®



**13-V88N1WA** ♦  
Latte VeraFlex®



**13-V88N1WA** ♦ | P/L #32  
Latte VeraFlex®



**13-37N20D** ♦ | P/L #32  
• Air Grid® back  
• Mesh seat  
• Pneumatic seat height  
• Adjustable footring  
• Heavy duty nylon base





**3680♦ | P/L #32**

- Light Air Grid® back
- Leather seat
- Fixed cantilever arms
- 2-to-1 synchro tilt
- Platinum finish base



**36806♦ | P/L #33**

- Light Air Grid® back
- Leather seat
- Fixed cantilever arms
- 2-to-1 synchro tilt
- Adjustable headrest
- Platinum finish base



**2300♦ | P/L #32**

- Breathable mesh back
- Mesh seat
- Height adjustable arms
- 2-to-1 synchro tilt
- Gunmetal finish base



**2400♦ | P/L #32**

- Breathable mesh back
- Leather seat
- Height adjustable arms
- 2-to-1 synchro tilt
- Gunmetal finish base

# HOSPITALITY<sup>Seating</sup>



- 74603LT♦ | P/L #37**
- Eco leather high back & seat
  - Polished aluminum arms
  - Locking tilt control
  - Polished aluminum base



- 74123LT♦ | P/L #37**
- Eco leather mid back & seat
  - Polished aluminum arms
  - Locking tilt control
  - Polished aluminum base



- 74023LT♦ | P/L #37**
- Eco leather high back & seat
  - Polished aluminum arms
  - Locking tilt control
  - Polished aluminum base

# HOSPITALITY Seating



- 7360MLT♦ | P/L #37**
- Breathable screen high back & seat
  - Polished aluminum arms
  - Locking tilt control
  - Polished aluminum base



- 74613LT♦ | P/L #37**
- Eco leather mid back & seat
  - Polished aluminum arms
  - Locking tilt control
  - Polished aluminum base



- 7361MLT♦ | P/L #37**
- Breathable screen mid back & seat
  - Polished aluminum arms
  - Locking tilt control
  - Polished aluminum base

# LOUNGE Seating

## SL8470 Lounge Series | P/L #38

- Black leather
- Cherry finish legs



SL8471 ♦ Club Chair



SL8472 ♦ Loveseat



SL8473 ♦ Sofa

## SL2270 Lounge Series | P/L #38

- Black eco leather -EC3
- Cherry finish legs



SL2271-EC3 ♦ Club Chair



SL2272-EC3 ♦ Loveseat



SL2273-EC3 ♦ Sofa

Modular laminate casegoods provide extensive selection, capability and value. Enter Napa in Cherry, Espresso and Mahogany wood grain laminates. Impact-resistant 3mm PVC edges feature wood grain design and tri-groove design detail. From executive and management offices to task environments and high-density areas, Napa excels for today's businesses. Napa complies with ANSI/BIFMA standards.



**ESP** Espresso    **MAH** Mahogany    **CHY** Cherry

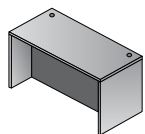


**Finish Key**  
**CHY** - Cherry  
**MAH** - Mahogany  
**ESP** - Espresso

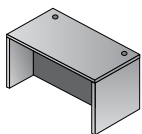
\*\* Not available in Espresso



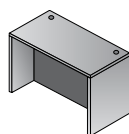
## NAPA Cherry/Espresso/Mahogany · Units



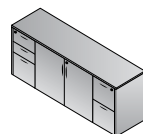
**NAPA01**  
**Desk Shell**  
 70.5"x36.5"x29"  
 CU:6.4 WT:162.0  
 List Price: \$575



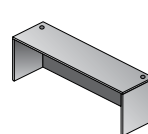
**NAPA02**  
**Desk Shell**  
 66"x30"x29"  
 CU:5.1 WT:135.6  
 List Price: \$475



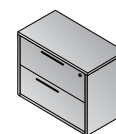
**NAPA03**  
**Desk Shell**  
 60"x30"x29"  
 CU:4.6 WT:127.9  
 List Price: \$450



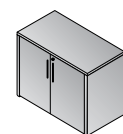
**NAPA10**  
**Storage Credenza**  
 72"x22"x29"  
 CU:30.6 WT:220.0  
 List Price: \$1925  
*Ships Assembled*



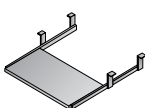
**NAPA11**  
**Credenza Shell**  
 66"x24"x29"  
 CU:4.6 WT:116.6  
 List Price: \$395



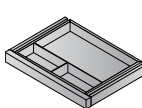
**NAPA12**  
**Lateral File**  
 36"x22"x29"  
 CU:15.5 WT:149.9  
 List Price: \$805  
*Ships Assembled*



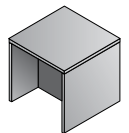
**NAPA13**  
**Storage Cabinet**  
 36"x22"x29"  
 CU:5.5 WT:117.9  
 List Price: \$520



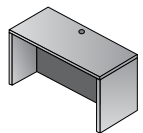
**NAPA14**  
**Keyboard Tray**  
 26"x12"  
 CU:0.6 WT:13.2  
 List Price: \$85



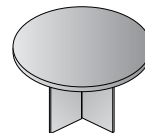
**NAPA15**  
**Center Drawer**  
 20"x15"  
 CU:0.8 WT:8.8  
 List Price: \$85



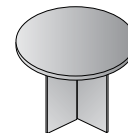
**NAPA20**  
**End Table**  
 24"x24"x20"  
 CU:2.0 WT:49.6  
 List Price: \$295



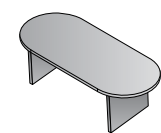
**NAPA21**  
**Desk Shell**  
 48"x30"x29"  
 CU:4.8 WT:110.2  
 List Price: \$440



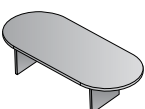
**NAPA23**  
**Round Table**  
 47"Dia.x29"H  
 CU:6.8 WT:109.1  
 List Price: \$645



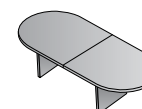
**NAPA27**  
**Round Table**  
 42"Dia.x29"H  
 CU:5.4 WT:94.8  
 List Price: \$555



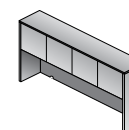
**NAPA35**  
**Conference Table**  
 71"x35"x29"  
 CU:6.7 WT:138.9  
 List Price: \$645



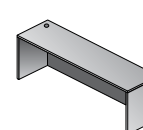
**NAPA36**  
**Conference Table**  
 95"x44"x29"  
 CU:10.8 WT:189.6  
 List Price: \$835



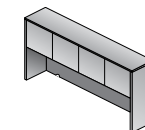
**NAPA37**  
**Conference Table**  
 120"x48"x29"  
 CU:11.3 WT:246.9  
 List Price: \$1145



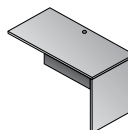
**NAPA39**  
**Overhead Storage**  
 66"x15"x36"  
 CU:5.7 WT:132.0  
 List Price: \$575



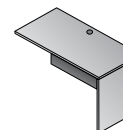
**NAPA43**  
**Credenza Shell**  
 71"x24"x29"  
 CU:5.1 WT:122.4  
 List Price: \$425



**NAPA44**  
**Overhead Storage**  
 71"x15"x36"  
 CU:6.0 WT:185.0  
 List Price: \$660

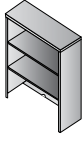


**NAPA45**  
**Return Shell**  
 47"x23.5"x29"  
 CU:3.8 WT:90.4  
 List Price: \$375

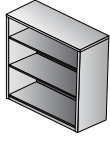


**NAPA46**  
**Return Shell**  
 42"x20"x29"  
 CU:3.4 WT:88.2  
 List Price: \$315  
*\*\*Use with NAP76 Ped*

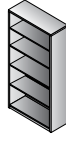
## NAPA Cherry/Espresso/Mahogany · Units



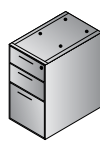
**NAP53**  
Open Hutch  
36"x14"x36"  
CU:3.9 WT:81.6  
List Price: \$350



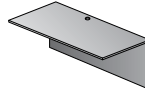
**NAP55**  
3-Shelf Bookcase  
36"x14"x42"  
CU:4.4 WT:98.1  
List Price: \$425



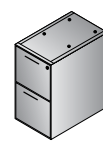
**NAP56**  
5-Shelf Bookcase  
36"x14"x65"  
CU:6.8 WT:149.9  
List Price: \$585



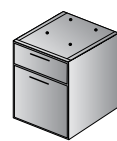
**NAP65**  
BBF Ped-Desk  
15.5"x22"x28"  
CU:7.0 WT:78.3  
List Price: \$555  
*Ships Assembled*



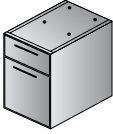
**NAP70**  
Bridge  
47"x23.5"x29"  
CU:2.8 WT:70.5  
List Price: \$295



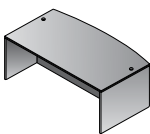
**NAP74**  
FF Ped-Desk  
15.5"x22"x28"  
CU:7.0 WT:73.9  
List Price: \$525  
*Ships Assembled*



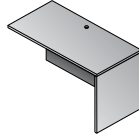
**NAP76**  
Hanging Ped-20" Return  
15.5"x18.5"x21"  
CU:4.5 WT:50.7  
List Price: \$425  
*Ships Assembled*  
*Use with NAP46*



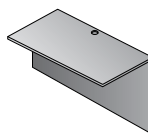
**NAP80**  
Hanging Ped-Desk  
15.5"x22"x21"  
CU:5.3 WT:60.6  
List Price: \$425  
*Ships Assembled*



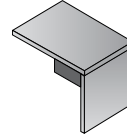
**NAP89**  
Bow Desk Shell  
71"x41"x29"  
CU:7.3 WT:173.1  
List Price: \$665



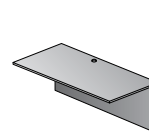
**NAP92**  
Return Shell  
35"x23.5"x29"  
CU:2.9 WT:73.9  
List Price: \$295



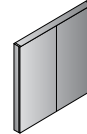
**NAP93**  
Bridge  
35"x23.5"x29"  
CU:2.2 WT:56.2  
List Price: \$240



**NAP96**  
Return Shell  
42"x23.5"x29"  
CU:3.2 WT:81.0  
List Price: \$340



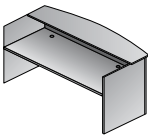
**NAP98**  
Bridge  
42"x23.5"x29"  
CU:2.5 WT:63  
List Price: \$275



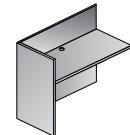
**NAP100**  
Presentation Board  
48"x48"  
CU:8.5 WT:101.4  
List Price: \$685  
*Ships Assembled*



**NAP109**  
Four-Drawer  
Lateral File  
36"x22"x56"  
CU:28.5 WT:235  
List Price: \$1855  
*Ships Assembled*



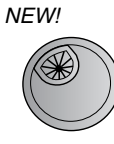
**NAP122**  
Reception Desk Shell  
71"x30"/36"x42"  
CU:8.3 WT:207.2  
List Price: \$795



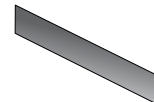
**NAP125**  
Reception Return Shell  
42"x24"x41"  
CU:4.1 WT:100.3  
List Price: \$400



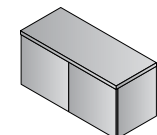
**NEW!**  
**NAP152**  
Storage Cabinet  
22.5"x24"x65"  
CU:23.5 WT:186.6  
List Price: \$1425  
*Ships Assembled*



**NEW!**  
**NAP-GM**  
Metallic Grommets  
(5-Pack)  
2.5"x2.5"x6"  
CU:0.02 WT:0.05  
List Price: \$90



**NAPTБ-3**  
Tackboard for NAP42,44  
SON44  
KEN42,44  
Black Fabric  
CU:1.2 WT:15  
List Price: \$180



**NAPWM36 \*\***  
Wall-Mount Overhead  
36"x15"x17"  
CU:6.7 WT:55  
List Price: \$395  
*Ships Assembled*  
*Not Available in Espresso*

**NEW!**



**NAP-PM**  
Metallic Drawer Pulls  
(10-Pack)  
2"x1"x4"  
CU:0.005 WT:0.01  
List Price: \$90



**NAP99-CHY** | P/L #39  
• Fabric covered seat  
• Cherry finish



**NAP99-ESP** | P/L #39  
• Fabric covered seat  
• Espresso finish



**NAP99-MAH** | P/L #39  
• Fabric covered seat  
• Mahogany finish

# TRAINING Tables

## Mobile. Folding. Nesting.

Table solutions your staff can quickly and easily change, rearrange and reset, responding to multiple requirements and multiple functions throughout the day. Tables feature heavy-duty metal frame, carpet casters, durable laminate tops with impact-resistant edging, and flip-top mechanism activated at either end of the table.

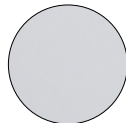


6', 5' & 4' flip-top tables lock into position, roll out of the way and nest for space savings when not in use.



Choose your size, frame color & top color. All table tops are 24" depth with matching laminate and edging.

### Top Color Options:



**G** Grey



**P** Maple

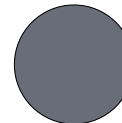


**C** Cherry



**M** Mahogany

### Frame Color Options:



**T** Titanium



**B** Black

## 72 x 24 Tables | P/L #42

**84226TG**  
6' Titanium Frame with Grey Top  
72"x24x29.5"H Training Table  
CU:6.4 WT: 94.6  
Components: 842FM6-T, 842T26-G

**84226TC**  
6' Titanium Frame with Cherry Top  
72"x24x29.5"H Training Table  
CU:6.4 WT: 94.6  
Components: 842FM6-T, 842T26-C

**84226TM**  
6' Titanium Frame with Mahogany Top  
72"x24x29.5"H Training Table  
CU:6.4 WT: 94.6  
Components: 842FM6-T, 842T26-M

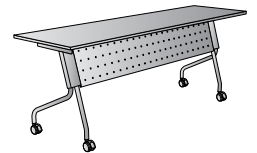
**84226TP**  
6' Titanium Frame with Maple Top  
72"x24x29.5"H Training Table  
CU:6.4 WT: 94.6  
Components: 842FM6-T, 842T26-P

**84226BG**  
6' Black Frame with Grey Top  
72"x24x29.5"H Training Table  
CU:6.4 WT: 94.6  
Components: 842FM6-B, 842T26-G

**84226BC**  
6' Black Frame with Cherry Top  
72"x24x29.5"H Training Table  
CU:6.4 WT: 94.6  
Components: 842FM6-B, 842T26-C

**84226BM**  
6' Black Frame with Mahogany Top  
72"x24x29.5"H Training Table  
CU:6.4 WT: 94.6  
Components: 842FM6-B, 842T26-M

**84226BP**  
6' Black Frame with Maple Top  
72"x24x29.5"H Training Table  
CU:6.4 WT: 94.6  
Components: 842FM6-B, 842T26-P



## 60 x 24 Tables | P/L #42

**84225TG**  
5' Titanium Frame with Grey Top  
60"x24x29.5"H Training Table  
CU:5.3 WT: 82.9  
Components: 842FM5-T, 842T25-G

**84225TC**  
5' Titanium Frame with Cherry Top  
60"x24x29.5"H Training Table  
CU:5.3 WT: 82.9  
Components: 842FM5-T, 842T25-C

**84225TM**  
5' Titanium Frame with Mahogany Top  
60"x24x29.5"H Training Table  
CU:5.3 WT: 82.9  
Components: 842FM5-T, 842T25-M

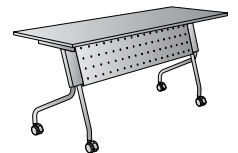
**84225TP**  
5' Titanium Frame with Maple Top  
60"x24x29.5"H Training Table  
CU:5.3 WT: 82.9  
Components: 842FM5-T, 842T25-P

**84225BG**  
5' Black Frame with Grey Top  
60"x24x29.5"H Training Table  
CU:5.3 WT: 82.9  
Components: 842FM5-B, 842T25-G

**84225BC**  
5' Black Frame with Cherry Top  
60"x24x29.5"H Training Table  
CU:5.3 WT: 82.9  
Components: 842FM5-B, 842T25-C

**84225BM**  
5' Black Frame with Mahogany Top  
60"x24x29.5"H Training Table  
CU:5.3 WT: 82.9  
Components: 842FM5-B, 842T25-M

**84225BP**  
5' Black Frame with Maple Top  
60"x24x29.5"H Training Table  
CU:5.3 WT: 82.9  
Components: 842FM5-B, 842T25-P



## 48 x 24 Tables | P/L #42

**84224TG**  
4' Titanium Frame with Grey Top  
48"x24x29.5"H Training Table  
CU:4.2 WT: 70.4  
Components: 842FM4-T, 842T24-G

**84224TC**  
4' Titanium Frame with Cherry Top  
48"x24x29.5"H Training Table  
CU:4.2 WT: 70.4  
Components: 842FM4-T, 842T24-C

**84224TM**  
4' Titanium Frame with Mahogany Top  
48"x24x29.5"H Training Table  
CU:4.2 WT: 70.4  
Components: 842FM4-T, 842T24-M

**84224TP**  
4' Titanium Frame with Maple Top  
48"x24x29.5"H Training Table  
CU:4.2 WT: 70.4  
Components: 842FM4-T, 842T24-P

**84224BG**  
4' Black Frame with Grey Top  
48"x24x29.5"H Training Table  
CU:4.2 WT: 70.4  
Components: 842FM4-B, 842T24-G

**84224BC**  
4' Black Frame with Cherry Top  
48"x24x29.5"H Training Table  
CU:4.2 WT: 70.4  
Components: 842FM4-B, 842T24-C

**84224BM**  
4' Black Frame with Mahogany Top  
48"x24x29.5"H Training Table  
CU:4.2 WT: 70.4  
Components: 842FM4-B, 842T24-M

**84224BP**  
4' Black Frame with Maple Top  
48"x24x29.5"H Training Table  
CU:4.2 WT: 70.4  
Components: 842FM4-B, 842T24-P



# METAL Storage

Commercial-quality lateral files with heavy-gauge steel, MIG and TIG-welded construction and powdered finishes.

Also:

- Standard random locking with replaceable lock cores and multiple lock numbers available
- Anti-tilt feature for one-drawer-at-a-time opening
- Counterweight for additional stability
- Full-width pull design for easy access
- Long-lasting steel ball-bearing drawer slides
- Passes BIFMA file testing X5.9-2004 Storage Units - Tests, which features 21 different testing standards
- Limited lifetime warranty
- Matching pedestals and storage units



Optional LF100 front-to-back file rails (set of 2) allows filing of Letter size files.



**36" WIDE FILES | P/L #40-41**

- LF236** 2-drawer lateral file
  - LF336** 3-drawer lateral file
  - LF436** 4-drawer lateral file
  - LF536** 5-drawer lateral file
- In Stock: Black **B** & Light Grey **G**.

**42" WIDE FILES | P/L #40-41**

- LF242** 2-drawer lateral file
- LF342** 3-drawer lateral file
- LF442** 4-drawer lateral file
- LF542** 5-drawer lateral file

Available in Black **B**, Charcoal **C**, Light Grey **G** & Putty **P**.

Option	Description	List Price
LF-LK1	Lock Core + 2 Keys	\$9
LF-LK2	Lock Housing, Core + 2 Keys - Lateral Files & Mobile (PTC) Pedestals	\$15

**Metal Storage Color Options:**







**92893-30 ♦ | P/L #43**

- ProGrid® back
- Contour mesh saddle seat
- Multi-function with seat slider
- 2-way adjustable arms
- Heavy duty nylon base



**92892-30 ♦ | P/L #43**

- ProGrid® back
- Contour mesh saddle seat
- Multi-function control
- 2-way adjustable arms
- Heavy duty nylon base



**92343-30 ♦ | P/L #43**

- ProGrid® back
- Contour mesh saddle seat
- Dual-function control
- 2-way adjustable arms
- Heavy duty nylon base



**90662-30 ♦ | P/L #43**

- ProGrid® back
- Contour mesh saddle seat
- 3 position, 2-to-1 synchro tilt control with seat slider
- 2-way adjustable arms
- Heavy duty nylon base

# ProLine Seating



Stacking

- 8610-30** ♦ | **P/L #45**
- Plastic ventilated back
  - Padded fabric seat
  - Nylon armrests
  - Titanium finish frame



- 8620-30** ♦ | **P/L #45**
- Plastic ventilated back
  - Padded fabric seat
  - Titanium finish frame



- 86710-30** ♦ | **P/L #45**
- ProGrid® back
  - Padded fabric seat
  - Nylon armrests
  - Titanium finish frame



- 86740-30** ♦ | **P/L #45**
- ProGrid® back
  - Padded fabric seat
  - Nylon armrests
  - Titanium finish frame with casters



- 86724-30** ♦ | **P/L #44**
- ProGrid® back
  - Padded fabric seat
  - Titanium finish frame



- 86725-30** ♦ | **P/L #45**
- ProGrid® back
  - Padded fabric seat
  - Titanium finish sled base



- 8640-30** ♦ | **P/L #46**
- Plastic ventilated back
  - Padded fabric seat
  - Nylon armrests
  - Titanium finish frame with casters
  - Horizontal nesting



- 8455-30** ♦ | **P/L #45**
- Plastic ventilated back
  - Padded fabric seat
  - Chrome finish sled base



- 84330-30** ♦ | **P/L #46**
- Plastic ventilated back
  - Padded fabric seat
  - Nylon armrests
  - Titanium finish frame with casters
  - Horizontal nesting



Horizontal nesting



- 84510-30** ♦ | **P/L #44**
- ProGrid® back
  - Padded fabric seat
  - Nylon armrests
  - Titanium finish frame



- 84540-30** ♦ | **P/L #44**
- ProGrid® back
  - Padded fabric seat
  - Nylon armrests
  - Titanium finish frame with casters



- 84440-30** ♦ | **P/L #46**
- ProGrid® back
  - Padded fabric seat
  - Nylon armrests
  - Titanium finish frame with casters
  - Horizontal nesting

# ProLine Seating



**97728-EC3 | P/L #44**

- ProGrid® back
- Thick padded eco leather seat
- Synchro control with infinite lock & seat slider
- 2-way adjustable arms
- Heavy duty titanium finish base



**97720-30 | P/L #43**

- ProGrid® back
- Thick padded mesh seat
- Synchro control with infinite lock & seat slider
- 2-way adjustable arms
- Heavy duty titanium finish base



**85670-30♦ | P/L #44**

- ProGrid® back
- Padded fabric seat
- Nylon armrests
- Titanium finish frame



**85640-30♦ | P/L #44**

- ProGrid® back
- Padded fabric seat
- Nylon armrests
- Titanium finish frame with casters



**54666-231♦ | P/L #43**

- Thick padded seat & back
- Black icon fabric -231
- 2-way adjustable arms
- 2-to-1 synchro tilt
- Seat slider
- Titanium finish base



Wall Street Collection

Black Faux Leather -B18

Wall Street seating available in Espresso -E34 or Black -B18 Faux Leather.



Espresso Faux Leather -E34



Black Faux Leather -B18

**WALL STREET COLLECTION | P/L #50-51**

- A. **WST51A**◆ - Armchair
- B. **WST51C**◆ - Corner chair
- C. **WST51LF**◆ - Armchair LAF
- D. **WST51N**◆ - Armless Chair
- E. **WST51RF**◆ - Armchair RAF

**PACIFIC COLLECTION | P/L #51**

- F. **PAC51** Armchair
  - G. **PAC52** Loveseat
- Available in Black vinyl -V18



Black Vinyl -V18



Pacific Collection

Black Vinyl -V18

# ECO LEATHER Seating



**EC9231-EC3 | P/L #47**

- Thick padded mid back & seat
- Black eco leather -EC3
- Locking tilt control
- Padded armrests
- Heavy duty nylon base

**EC9235-EC3 | P/L #48**

- Thick padded mid back & seat
- Black eco leather -EC3
- Padded armrests
- Heavy duty metal sled base

**EC9230-EC3 | P/L #47**

- Thick padded high back & seat
- Black eco leather -EC3
- Locking tilt control
- Padded armrests
- Heavy duty nylon base



Two-tone stitching  
EC6582-EC3



Black stitching  
EC6583-EC3



**EC22070-EC3 | P/L #47**

- Thick padded seat & back
- Black eco leather -EC3
- Dual-function control
- Nylon armrests
- Heavy duty nylon base

**EC6582-EC3/EC6583-EC3 | P/L #48**

- Thick padded seat & back
- Black eco leather -EC3
- Locking tilt control
- Padded armrests
- Two-tone stitching (EC6582 only)
- Heavy duty nylon base

**EC3393-EC3 | P/L #47**

- Thick padded seat & back
- Black eco leather -EC3
- Locking tilt control
- Nylon armrests
- Heavy duty nylon base

# WORK ECO LEATHER Seating



**-EC1 Espresso Eco Leather**    **Cocoa finish base**

**Black -EC3/Silver Finish Frame**

**ECH67101-EC1/ECH67106-EC3 | P/L #48**

- Thick padded back & seat
- Espresso -EC1 or Black -EC3 eco leather
- Locking tilt control
- Padded armrests
- Coated finish base with black end caps



**-EC3 Black Eco Leather**    **Titanium finish base**



**Espresso -EC1/ Cocoa Finish Frame**

**ECH83501-EC1/ECH83507-EC3 | P/L #49**

- Thick padded back & seat
- Espresso -EC1 or Black -EC3 eco leather
- Locking tilt control
- Padded armrests
- Coated finish base with black end caps



**Black -EC3/Silver Finish Frame**

**ECH66306-EC3/ECH66301-EC1 | P/L #48**

- Thick padded back & seat
- Espresso -EC1 or Black -EC3 eco leather
- Locking tilt control
- Padded armrests
- Coated finish base with black end caps



**Espresso -EC1/ Cocoa Finish Frame**

**ECH68807-EC3 | P/L #48**

- Thick padded back & seat
- Black -EC3 eco leather
- Locking tilt control
- Padded armrests
- Coated titanium finish base with black end caps



# FAUX LEATHER Seating



## FL9097-U6 | P/L #49

- Thick padded back & seat
- Black -U6 faux leather
- Locking tilt control
- Padded armrests with polished aluminum accents
- Heavy duty nylon base with aluminum accents



## FL89675-U6 | P/L #50

- Thick padded back & seat
- Black -U6 faux leather
- Locking tilt control
- Nylon flip arm
- Heavy duty nylon base



## FL605-U6 | P/L #49

- Thick padded back & seat
- Black -U6 faux leather
- Locking tilt control
- Padded armrests
- Heavy duty nylon base



## FL1055-U6 | P/L #50

- Thick padded back & seat
- Black -U6 faux leather
- Padded armrests
- Heavy duty metal sled base





**-U2** Chocolate Faux Leather



**-U6** Black Faux Leather



**FL644 | P/L #49**

- Thick padded back & seat
- Chocolate -U2 or Black -U6 faux leather
- Locking tilt control
- Nylon armrests
- Heavy duty nylon base

**FL642 | P/L #49**

- Thick padded back & seat
- Chocolate -U2 or Black -U6 faux leather
- Mid pivot knee tilt control
- Padded armrests
- Heavy duty nylon base



Espresso **-U1**/  
Cocoa Finish Frame



Black **-U6**/Silver  
Finish Frame



Espresso **-U1**/  
Cocoa Finish Frame



**FLH80011-U1/FLH0016-U6 | P/L #50**

- Thick padded back & seat
- Espresso -U1 or Black -U6 faux leather
- Padded armrests
- Coated base with black end caps

**FLH80001-U1/FLH0006-U6 | P/L #50**

- Thick padded back & seat
- Espresso -U1 or Black -U6 faux leather
- Padded armrests
- Coated base with black end caps



Charcoal -320



Black Faux Leather -U6

**WD383 | P/L #51**

- Padded fabric seat & back
- Taupe -316, Ruby -318, Charcoal -320 or Black Faux Leather -U6
- Mahogany finish frame



Taupe -316

**WD388 | P/L #52**

- Padded fabric seat & back
- Taupe 316 or Black Faux Leather -U6
- Espresso finish frame



Black Faux Leather -U6

**WD387 | P/L #52**

- Padded fabric seat & back
- Midnight Blue -317, Taupe 316, Charcoal -320 or Black Faux Leather -U6
- Cherry finish frame

**Fabric Options**



-316 Taupe



-317 Midnight Blue



-318 Ruby



-320 Charcoal



-U6 Black Faux Leather



Black -3 Top Grain Leather



Burgundy Jamestown -JT4 Vinyl

**TV230-3/TV230-JT4 | P/L #52**

- Padded seat & back
- Black top grain leather -3 or Burgundy Jamestown vinyl -JT4
- Mahogany finish frame

**TV231-3/TV231-JT4 | P/L #52**

- Padded seat & back
- Black top grain leather -3 or Burgundy Jamestown vinyl -JT4
- Mahogany finish frame with casters



**V4420-231 ♦ | P/L #53**

- Padded black fabric seat & back
- Black metal sled base



**V4410-231 ♦ | P/L #52**

- Padded black fabric seat & back
- Nylon padded armrests
- Black metal sled base



**EX8124-3 | P/L #49**

- Leather seat & back
- Padded armrests
- Black metal frame

# VENTILATED Seating



**EM51022N | P/L #53**

- Breathable screen back
- Thick padded seat in black -3 mesh
- Locking tilt control
- Fixed designer arms
- Angled nylon base



**183305 | P/L #54**

- Breathable screen back
- Thick padded mesh seat
- Nylon arms
- Black metal frame



**599302 | P/L #53**

- Breathable woven mesh back
- Thick padded black mesh seat
- Locking tilt control
- Height adjustable arms
- Heavy duty nylon base



**599402 | P/L #54**

- Breathable woven mesh back
- Thick padded black leather seat
- Locking tilt control
- Height adjustable arms
- Heavy duty nylon base



**EM50727-3 | P/L #53**

- Breathable screen back
- Thick padded black mesh seat
- Locking tilt control
- Height adjustable arms
- Heavy duty nylon base

# VENTILATED/ERGO Seating



**43808-231** | P/L #47

- Thick padded seat & back
- Ratchet back height adjustment
- Dual-function control
- 2-way adjustable arms
- Heavy duty nylon base



**3121-231** | P/L #47

- Thick padded seat & back
- 2-to-1 synchro tilt
- 2-way adjustable arms
- Heavy duty nylon base



**DC2990** | P/L #52

- Breathable screen back
- Thick padded mesh seat
- Pneumatic seat height adjustment
- Adjustable footring
- Heavy duty nylon base



**583814** | P/L #53

- Breathable screen back
- Thick padded black leather seat
- Locking tilt control
- Height adjustable arms
- Chrome finish base



**583713** | P/L #53

- Breathable screen back
- Thick padded black mesh seat
- Locking tilt control
- Height adjustable arms
- Titanium finish base

# RESIN Tables & Chairs



All resin tables & chairs feature a light weight, sleek design with durable construction. All items also feature powder coated frames and are ideal for both indoor and outdoor use. All items meet or exceed BIFMA and MTL test standards.



**BT04Q | P/L #55**  
• 4' resin table



**BT05Q | P/L #55**  
• 5' resin table



**BT06Q | P/L #55**  
• 6' resin table



**BT6FQ | P/L #55**  
• 6' resin table  
• Folds in half  
• Handle for easy mobility



Folds in half for easy mobility



**BT08Q | P/L #55**  
• 8' resin table



**BT48Q** | P/L #55  
• 48" round resin table



**BT48F** | P/L #55  
• 48" round resin table  
• Folds in half  
• Handle for easy mobility



Folds in half for easy mobility



**PC54** | P/L #54  
• Resin chair  
• 4 pack



**BT60Q** | P/L #55  
• 60" round resin table



**PC02** | P/L #54  
• Resin chair  
• 4 pack



**BT71** | P/L #55  
• 71" round resin table

# Price List SPACE Seating



**13-37N20D** Deluxe AirGrid® Back Drafting Chair with Black Mesh Seat, Adjustable Footring and Nylon Base

**Overall Size:** 21.25W x 25.5D x 51H

**Seat:** 19.5W x 20D x 4T **Back:** 20W x 19H **Seat Range:** 27.5 - 32.5

**Arms to Floor:** N/A **Weight:** 37 **UPS Weight:** 59 **COM:** N/A

**Carton:** 28L x 27W x 14H **Cube:** 6.12

**Options:** A15 Arms **Features:** 1, 4 **Control:** Pneumatic Seat Height

**Notes:**

GREENGUARD Indoor Air Quality Certified®

<b>Fabric</b> Dark AirGrid® Back and Black Mesh Seat	<b>List Price</b>  495.00
IN	



**13-V44N1WA** Deluxe Chair with Charcoal VeraFlex® Back 2-to-1 Synchro Tilt Control and 2-Way Adjustable Arms

**Overall Size:** 27W x 26.5D x 40H

**Seat:** 19.5W x 20D x 4T **Back:** 20W x 19H **Seat Range:** 17.75-22.5

**Arms to Floor:** 25.5 **Weight:** 41 **UPS Weight:** 51 **COM:** N/A

**Carton:** 27L x 26W x 13H **Cube:** 5.28

**Options:** N/A **Features:** 1, 4, 7, 8, 9 **Control:** 2-to-1 Synchro Tilt

**Notes:**

GREENGUARD Indoor Air Quality Certified®

<b>Fabric</b> Charcoal VeraFlex® Back and Matching Seat	<b>List Price</b>  440.00
IN	



**13-V88N1WA** Deluxe Chair with Latte VeraFlex® Back 2-to-1 Synchro Tilt Control and 2-Way Adjustable Arms

**Overall Size:** 27W x 26.5D x 40H

**Seat:** 19.5W x 20D x 4T **Back:** 20W x 19H **Seat Range:** 17.75-22.5

**Arms to Floor:** 25.5 **Weight:** 41 **UPS Weight:** 51 **COM:** N/A

**Carton:** 27L x 26W x 13H **Cube:** 5.28

**Options:** N/A **Features:** 1, 4, 7, 8, 9 **Control:** 2-to-1 Synchro Tilt

**Notes:**

GREENGUARD Indoor Air Quality Certified®

<b>Fabric</b> Latte VeraFlex® Back and Matching Seat	<b>List Price</b>  440.00
IN	



**2300** Breathable Mesh Back and Mesh Seat Managers Chair with Adjustable Arms, Adjustable Lumbar and Gunmetal Finish Base

**Overall Size:** 27.25W x 25.75D x 46.25H

**Seat:** 20W x 19.5D x 3T **Back:** 22.5W x 24.5H **Seat Range:** 18.5-22.75

**Arms to Floor:** 25 **Weight:** 48 **UPS Weight:** 54 **COM:** N/A

**Carton:** 31L x 26W x 12H **Cube:** 5.59

**Options:** N/A **Features:** 1, 4, 7, 8, 9 **Control:** 2-to-1 Synchro Tilt

**Notes:**

GREENGUARD Indoor Air Quality Certified®

<b>Fabric</b> Breathable Mesh Back and Black Mesh Seat	<b>List Price</b>  615.00
IN	



**2400** Breathable Mesh Back and Leather Seat Managers Chair with Adjustable Arms, Adjustable Lumbar and Gunmetal Finish Base

**Overall Size:** 27.25W x 25.75D x 46.25H

**Seat:** 20W x 19.5D x 3T **Back:** 22.5W x 24.5H **Seat Range:** 18.5-22.75

**Arms to Floor:** 25 **Weight:** 48 **UPS Weight:** 54 **COM:** N/A

**Carton:** 31L x 26W x 12H **Cube:** 5.59

**Options:** N/A **Features:** 1, 4, 7, 8, 9 **Control:** 2-to-1 Synchro Tilt

**Notes:**

GREENGUARD Indoor Air Quality Certified®

<b>Fabric</b> Breathable Mesh Back and Black Leather Seat	<b>List Price</b>  650.00
IN	



**3680** Light AirGrid® Back Managers Chair with Black Top Grain Leather Seat, Adjustable Lumbar and Platinum Finish Base

**Overall Size:** 27.5W x 27D x 44H

**Seat:** 20W x 20D x 4T **Back:** 21W x 22H **Seat Range:** 18-22.5

**Arms to Floor:** 26 **Weight:** 48 **UPS Weight:** 61 **COM:** N/A

**Carton:** 32L x 26W x 13H **Cube:** 6.25

**Options:** N/A **Features:** 1, 4, 7, 8, 9 **Control:** 2-to-1 Synchro Tilt

**Notes:**

GREENGUARD Indoor Air Quality Certified®

<b>Fabric</b> Light AirGrid® Back and Black Top Grain Leather Seat and Trim	<b>List Price</b>  850.00
IN	



# Price List SPACE Seating



**36806** Light AirGrid® Back Managers Chair with Black Top Grain Leather Seat, Adjustable Headrest, Adjustable Lumbar and Platinum Finish Base  
**Overall Size:** 27.5W x 27D x 54.5H  
**Seat:** 20W x 20D x 4T **Back:** 21W x 22H **Seat Range:** 18-22.5  
**Arms to Floor:** 26 **Weight:** 58 **UPS Weight:** 72 **COM:** N/A  
**Carton:** 38L x 26W x 13H **Cube:** 7.43  
**Options:** N/A **Features:** 1, 4, 7, 8, 9 **Control:** 2-to-1 Synchro Tilt  
**Notes:**  
 GREENGUARD Indoor Air Quality Certified®

<b>Fabric</b> Light AirGrid® Back and Black Top Grain Leather Seat and Trim	<b>List Price</b> 950.00
IN	



**5500®** AirGrid® Back and Black Mesh Seat, Adjustable Angled Arms and Angled Nylon Base  
**Overall Size:** 26.5W x 25.25D x 42H  
**Seat:** 20.5W x 19.5D x 3.5T **Back:** 20.5W x 18.5H **Seat Range:** 18.75-23  
**Arms to Floor:** 25.5 **Weight:** 40 **UPS Weight:** 53 **COM:** N/A  
**Carton:** 28L x 26W x 13H **Cube:** 5.47  
**Options:** N/A **Features:** 1, 4, 7, 8, 9 **Control:** 2-to-1 Synchro Tilt  
**Notes:**  
 GREENGUARD Indoor Air Quality Certified®

<b>Fabric</b> Dark AirGrid® Back and Black Mesh Seat	<b>List Price</b> 375.00
IN	



**5505** Professional AirGrid® Back Visitors Chair with Black Mesh Seat, Fixed Arms and Sled Base  
**Overall Size:** 24.5W x 25.5D x 37.25H  
**Seat:** 20.5W x 19.5D x 3T **Back:** 20.5W x 18.5H **Seat Range:** 19  
**Arms to Floor:** 25.5 **Weight:** 40 **UPS Weight:** 58 **COM:** N/A  
**Carton:** 27L x 24W x 16H **Cube:** 6.0  
**Options:** N/A **Features:** N/A **Control:** N/A  
**Notes:**  
 GREENGUARD Indoor Air Quality Certified®

<b>Fabric</b> Dark AirGrid® Back and Black Mesh Seat	<b>List Price</b> 340.00
IN	



**5540** AirGrid® Back and Mesh Seat Managers Chair with Adjustable Angled Arms, Adjustable Lumbar and Angled Nylon Base  
**Overall Size:** 27.5W x 28.5D x 46H  
**Seat:** 21.75W x 19.5D x 4.25T **Back:** 20.5W x 32.75H **Seat Range:** 19-23.25  
**Arms to Floor:** 25.5 **Weight:** 48 **UPS Weight:** 70 **COM:** N/A  
**Carton:** 37L x 26W x 13H **Cube:** 7.23  
**Options:** HRM003 **Features:** 1, 4, 7, 8, 9 **Control:** 2-to-1 Synchro Tilt  
**Notes:**  
 GREENGUARD Indoor Air Quality Certified®

<b>Fabric</b> Dark AirGrid® Back and Black Mesh Seat and Trim	<b>List Price</b> 500.00
IN	



**5560** AirGrid® Seat and Back Task Chair with Adjustable Angled Arms and Angled Nylon Base  
**Overall Size:** 26.75W x 26.5D x 42H  
**Seat:** 20.5W x 21D **Back:** 20.5W x 18.5H **Seat Range:** 18-22.25  
**Arms to Floor:** 25.5 **Weight:** 40 **UPS Weight:** 53 **COM:** N/A  
**Carton:** 28L x 26W x 13H **Cube:** 5.47  
**Options:** N/A **Features:** 1, 4, 7, 8, 9 **Control:** 2-to-1 Synchro Tilt  
**Notes:**  
 GREENGUARD Indoor Air Quality Certified®

<b>Fabric</b> Dark AirGrid® Seat and Back	<b>List Price</b> 440.00
IN	



**55403** AirGrid® Back and Mesh Seat Managers Chair with Adjustable Headrest, Adjustable Angled Arms, Adjustable Lumbar and Angled Nylon Base  
**Overall Size:** 27.5W x 28.5D x 56.25H  
**Seat:** 21.75W x 19.5D x 4.25T **Back:** 20.5W x 32.75H **Seat Range:** 19-23.25  
**Arms to Floor:** 25.5 **Weight:** 48 **UPS Weight:** 70 **COM:** N/A  
**Carton:** 37L x 26W x 13H **Cube:** 7.23  
**Options:** N/A **Features:** 1, 4, 7, 8, 9 **Control:** 2-to-1 Synchro Tilt  
**Notes:**  
 GREENGUARD Indoor Air Quality Certified®

<b>Fabric</b> Dark AirGrid® Back and Black Mesh Seat and Trim	<b>List Price</b> 595.00
IN	



# Price List SPACE Seating



**5700®** AirGrid® Back and Black Leather Seat, Adjustable Angled Arms and Angled Nylon Base  
**Overall Size:** 26.5W x 25.25D x 42H  
**Seat:** 20.5W x 19.5D x 3.5T **Back:** 20.5W x 18.5H **Seat Range:** 18.75-23  
**Arms to Floor:** 25.5 **Weight:** 40 **UPS Weight:** 55 **COM:** N/A  
**Carton:** 28L x 27W x 13H **Cube:** 5.68  
**Options:** N/A **Features:** 1, 4, 7, 8, 9 **Control:** 2-to-1 Synchro Tilt  
**Notes:**  
 GREENGUARD Indoor Air Quality Certified®

<b>Fabric</b> Dark AirGrid® Back and Black Leather Seat	<b>List Price</b> 415.00
IN	



**57906** AirGrid® Back and Leather Seat Managers Chair with Adjustable Headrest, Adjustable Angled Arms, Adjustable Lumbar and Angled Nylon Base  
**Overall Size:** 27.5W x 28.5D x 56.25H  
**Seat:** 21.75W x 19.5D x 4.25T **Back:** 20.5W x 32.75H **Seat Range:** 19-23.25  
**Arms to Floor:** 25.5 **Weight:** 48 **UPS Weight:** 67 **COM:** N/A  
**Carton:** 37L x 27W x 12H **Cube:** 6.93  
**Options:** N/A **Features:** 1, 4, 7, 8, 9 **Control:** 2-to-1 Synchro Tilt  
**Notes:**  
 GREENGUARD Indoor Air Quality Certified®

<b>Fabric</b> Dark AirGrid® Back and Black Leather Seat and Trim	<b>List Price</b> 695.00
IN	



**75-37A773** Double AirGrid® Back and Black Mesh Seat Ergonomic Chair with Adjustable Lumbar, 2-Way Adjustable Arms and Gunmetal Finish Base  
**Overall Size:** 30.25W x 28.75D x 44.5H  
**Seat:** 22W x 21D x 4.25T **Back:** 20.75W x 22.25H **Seat Range:** 19-22  
**Arms to Floor:** 25.5 **Weight:** 62 **UPS Weight:** 62 **COM:** N/A  
**Carton:** 28L x 27W x 14H **Cube:** 6.12  
**Options:** N/A **Features:** 1, 4, 6, 8, 9 **Control:** Mid Pivot Knee Tilt  
**Notes:**  
 GREENGUARD Indoor Air Quality Certified®

**Big & Tall  
400 lbs.**

<b>Fabric</b> Double Dark AirGrid® Back and Black Mesh Seat	<b>List Price</b> 900.00
IN	



**75-47A773** Double AirGrid® Back and Black Leather Seat Ergonomic Chair with Adjustable Lumbar, 2-Way Adjustable Arms and Gunmetal Finish Base  
**Overall Size:** 30.25W x 28.75D x 44.5H  
**Seat:** 22W x 21D x 4.25T **Back:** 20.75W x 22.25H **Seat Range:** 19-22  
**Arms to Floor:** 25.5 **Weight:** 62 **UPS Weight:** 62 **COM:** N/A  
**Carton:** 28L x 27W x 14H **Cube:** 6.12  
**Options:** N/A **Features:** 1, 4, 6, 8, 9 **Control:** Mid Pivot Knee Tilt  
**Notes:**  
 GREENGUARD Indoor Air Quality Certified®

**Big & Tall  
400 lbs.**

<b>Fabric</b> Double Dark AirGrid® Back and Black Leather Seat	<b>List Price</b> 975.00
IN	



**335-47P918P** Professional AirGrid® Back Chair with Black Leather Seat and Trim, Adjustable Arms, Adjustable Lumbar, and Angled Polished Aluminum Base  
**Overall Size:** 28W x 25.75D x 45H  
**Seat:** 20W x 19D x 3T **Back:** 20.5W x 23H **Seat Range:** 18.25-22.25  
**Arms to Floor:** 24.75 **Weight:** 41 **UPS Weight:** 61 **COM:** N/A  
**Carton:** 32L x 26W x 13H **Cube:** 6.25  
**Options:** N/A **Features:** 1, 4, 7, 8, 9 **Control:** 2-to-1 Synchro Tilt  
**Notes:** GREENGUARD Indoor Air Quality Certified®

<b>Fabric</b> Dark AirGrid® Back and Black Leather Seat and Trim	<b>List Price</b> 700.00
IN	



**529-3R2N1F5** Deluxe R2 SpaceGrid® Back Chair with Mesh Seat, Flip Arms and Nylon Base  
**Overall Size:** 27.5W x 25.5D x 43H  
**Seat:** 20.75W x 19.5 x 4TD **Back:** 22.25W x 28H **Seat Range:** 17.75-22  
**Arms to Floor:** 25.75 **Weight:** 43 **UPS Weight:** 43 **COM:** N/A  
**Carton:** 31L x 22W x 11H **Cube:** 4.34  
**Options:** N/A **Features:** 1, 4, 7, 8, 9 **Control:** 2-to-1 Synchro Tilt  
**Notes:**

<b>Fabric/Frame</b> R2 SpaceGrid® Back and Black Mesh Seat	<b>List Price</b> 450.00
IN	<b>NEW</b>

# Price List SPACE Seating



**529-4R2N1F5** Deluxe R2 SpaceGrid® Back Chair with Leather Seat, Flip Arms and Nylon Base

**Overall Size:** 27.5W x 25.5D x 43H  
**Seat:** 20.75W x 19.5 x 4TD **Back:** 22.25W x 28H **Seat Range:** 17.75-22  
**Arms to Floor:** 25.75 **Weight:** 43 **UPS Weight:** 43 **COM:** N/A  
**Carton:** 31L x 22W x 11H **Cube:** 4.34  
**Options:** N/A **Features:** 1, 4, 7, 8, 9 **Control:** 2-to-1 Synchro Tilt  
**Notes:**

Fabric/Frame	List Price
R2 SpaceGrid® Back and Black Leather Seat	500.00
<b>NEW</b>	
IN	



**529-R22N1F5** Deluxe R2 SpaceGrid® Seat and Back Chair with Flip Arms and Nylon Base

**Overall Size:** 27.5W x 25.5D x 43H  
**Seat:** 20.75W x 19.5 x 4TD **Back:** 22.25W x 28H **Seat Range:** 17.75-22  
**Arms to Floor:** 25.5 **Weight:** 43 **UPS Weight:** 43 **COM:** N/A  
**Carton:** 31L x 22W x 11H **Cube:** 4.34  
**Options:** N/A **Features:** 1, 4, 7, 8, 9 **Control:** 2-to-1 Synchro Tilt  
**Notes:**

Fabric	List Price
R2 SpaceGrid® Back and Seat	500.00
<b>NEW</b>	
IN	



**818-11G9C18P** Breathable Mesh Back and Seat with Adjustable Arms and Lumbar, Seat Slider and Gunmetal Finish Angled Base

**Overall Size:** 27.75W x 28.5D x 44H  
**Seat:** 21.5W x 19.5D **Back:** 19.75W x 23H **Seat Range:** 17.75-20.25  
**Arms to Floor:** 25.5 **Weight:** 52 **UPS Weight:** 65 **COM:** N/A  
**Carton:** 32L x 26W x 14H **Cube:** 6.74 **Options:** HRX818, A7U Arms  
**Features:** 1, 3, 4, 7, 8, 9 **Control:** Ultra 2-to-1 w/Seat Slider  
**Notes:** To Order with A7U Arms use Model# **818-11G9C1A7U**  
**GREENGUARD Indoor Air Quality Certified®**

Fabric	List Price
Black Breathable Mesh Seat and Back	995.00
<b>IN 300 lbs.</b>	
IN	



**818-31G9C18P** Breathable Mesh Back and Black Mesh Seat with Adjustable Arms and Lumbar, Seat Slider and Gunmetal Finish Angled Base

**Overall Size:** 27.75W x 28.5D x 44H  
**Seat:** 20W x 19D x 3T **Back:** 19.75W x 23H **Seat Range:** 17.75-20.25  
**Arms to Floor:** 25.5 **Weight:** 52 **UPS Weight:** 65 **COM:** N/A  
**Carton:** 32L x 26W x 14H **Cube:** 6.74 **Options:** HRX818, HRM818, A7U Arm  
**Features:** 1, 3, 4, 7, 8, 9 **Control:** Ultra 2-to-1 w/Seat Slider  
**Notes:** To Order with A7U Arms use Model# **818-31G9C1A7U**  
**GREENGUARD Indoor Air Quality Certified®**

Fabric	List Price
Black Breathable Mesh Back and Black Mesh Seat	875.00
<b>IN 300 lbs.</b>	
IN	



**818-41G9C18P** Breathable Mesh Back and Black Leather Seat with Adjustable Arms and Lumbar, Seat Slider and Gunmetal Finish Angled Base

**Overall Size:** 27.75W x 28.5D x 44H  
**Seat:** 20W x 19D x 3T **Back:** 19.75W x 23H **Seat Range:** 17.75-20.25  
**Arms to Floor:** 25.5 **Weight:** 52 **UPS Weight:** 65 **COM:** N/A  
**Carton:** 32L x 26W x 14H **Cube:** 6.74 **Options:** HRX818, HRL818, A7U Arm  
**Features:** 1, 3, 4, 7, 8, 9 **Control:** Ultra 2-to-1 w/Seat Slider  
**Notes:** To Order with A7U Arms use Model# **818-41G9C1A7U**  
**GREENGUARD Indoor Air Quality Certified®**

Fabric	List Price
Black Breathable Mesh Back and Black Leather Seat	950.00
<b>IN 300 lbs.</b>	
IN	



**818A-41P9C1C3** Breathable Mesh Back and Leather Seat with Cantilever Arms, Adjustable Lumbar, Seat Slider and Polished Aluminum Finish Base

**Overall Size:** 28W x 28.5D x 44H  
**Seat:** 20W x 19D x 3T **Back:** 19.75W x 23H **Seat Range:** 17.75-20.25  
**Arms to Floor:** 25.5 **Weight:** 55 **UPS Weight:** 65 **COM:** N/A  
**Carton:** 32L x 26W x 14H **Cube:** 6.74 **Options:** HRX818  
**Features:** 1, 3, 4, 7, 8, 9 **Control:** Ultra 2-to-1 w/Seat Slider  
**Notes:**  
**GREENGUARD Indoor Air Quality Certified®**

Fabric	List Price
Black Breathable Mesh Back and Black Top Leather Seat	1050.00
<b>IN 300 lbs.</b>	
IN	



# Price List SPACE Seating



**829-R22C728P** Charcoal DuraFlex with Flow Through Technology™ Seat and Back with Adjustable Arms, Adjustable Lumbar and Gunmetal Finish Base

**Overall Size:** 27.5W x 24.25D x 45.25H

**Seat:** 21.25W x 20D **Back:** 20.5W x 23H **Seat Range:** 18.5-22.75

**Arms to Floor:** 25.75 **Weight:** 49 **UPS Weight:** 54 **COM:** N/A

**Carton:** 31L x 26W x 12H **Cube:** 5.59 **Options:** A7U Arms

**Features:** 1, 4, 9, 14 **Control:** 2-to-1 Synchro Tilt

**Notes:** To Order with A7U Arms use Model# **829-R22C72A7U**

GREENGUARD Indoor Air Quality Certified®

**300 lbs.**

Fabric	List Price
Charcoal DuraFlex with Flow Through Technology™ Seat and Back	750.00
IN	



**829-R11C628P** White DuraFlex with Flow Through Technology™ Seat and Back with Adjustable Arms, Adjustable Lumbar and Platinum Finish Base

**Overall Size:** 27.5W x 24.25D x 45.25H

**Seat:** 21.25W x 20D **Back:** 20.5W x 23H **Seat Range:** 18.5-22.75

**Arms to Floor:** 25.75 **Weight:** 49 **UPS Weight:** 54 **COM:** N/A

**Carton:** 31L x 26W x 12H **Cube:** 5.59 **Options:** A7U Arms

**Features:** 1, 4, 9, 14 **Control:** Self Adjusting 4-to-1 Synchro Tilt

**Notes:** To Order with A7U Arms use Model# **829-R11C82A7U**

GREENGUARD Indoor Air Quality Certified®

**300 lbs.**

Fabric	List Price
White DuraFlex with Flow Through Technology™ Seat and Back	750.00
IN	

# Price List Hospitality Seating



**7360MLT** High Back Mesh Screen Back and Seat Chair with Locking Tilt Control and Polished Aluminum Arms and Base

**Overall Size:** 21.5W x 24.75D x 46.5H

**Seat:** 19W x 17.5D **Back:** 18W x 25H **Seat Range:** 18.25 - 21

**Arms to Floor:** 26.75 **Weight:** 43 **UPS Weight:** 138 **COM:** N/A

**Carton:** 38L x 26W x 25H **Cube:** 14.29 **LTL Cube:** 10.0

**Options:** N/A **Features:** 1, 4, 5, 8, 9 **Control:** Locking Tilt

**Notes:** Replaces 7360M

GREENGUARD Indoor Air Quality Certified®

Replaces 7360M

**NEW**

Fabric	List Price
Black Mesh Screen Seat and Back with Polished Aluminum Arms and Base	525.00
IN	



**7361MLT** Mid Back Mesh Screen Back and Seat Chair with Locking Tilt Control and Polished Aluminum Arms and Base

**Overall Size:** 21.25W x 24.25D x 39H

**Seat:** 19W x 17.5D **Back:** 17.75W x 19H **Seat Range:** 18.25 - 21

**Arms to Floor:** 26.75 **Weight:** 42 **UPS Weight:** 133 **COM:** N/A

**Carton:** 33L x 29W x 25H **Cube:** 13.84 **LTL Cube:** 8.8

**Options:** N/A **Features:** 1, 4, 5, 8, 9 **Control:** Locking Tilt

**Notes:** Replaces 7361M

GREENGUARD Indoor Air Quality Certified®

Replaces 7361M

**NEW**

Fabric	List Price
Black Mesh Screen Seat and Back with Polished Aluminum Arms and Base	495.00
IN	



**74603LT** High Back Black Eco Leather Chair with Locking Tilt Control and Polished Aluminum Arms and Base

**Overall Size:** 21.5W x 24.75D x 46.5H

**Seat:** 19W x 17.5D **Back:** 18W x 25H **Seat Range:** 18.25 - 21

**Arms to Floor:** 26.75 **Weight:** 45 **UPS Weight:** 138 **COM:** N/A

**Carton:** 38L x 26W x 25H **Cube:** 14.29 **LTL Cube:** 10.0

**Options:** N/A **Features:** 1, 4, 5, 8, 9 **Control:** Locking Tilt

**Notes:** Replaces 74603

GREENGUARD Indoor Air Quality Certified®

Replaces 74603

**NEW**

Fabric	List Price
Black Eco Leather Seat and Back with Polished Aluminum Arms and Base	525.00
IN	



**74023LT** High Back White Eco Leather Chair with Locking Tilt Control and Polished Aluminum Arms and Base

**Overall Size:** 21.5W x 24.75D x 46.5H

**Seat:** 19W x 17.5D **Back:** 18W x 25H **Seat Range:** 18.25 - 21

**Arms to Floor:** 26.75 **Weight:** 45 **UPS Weight:** 138 **COM:** N/A

**Carton:** 38L x 26W x 25H **Cube:** 14.29 **LTL Cube:** 10.0

**Options:** N/A **Features:** 1, 4, 5, 8, 9 **Control:** Locking Tilt

**Notes:** Replaces 74023

GREENGUARD Indoor Air Quality Certified®

Replaces 74023

**NEW**

Fabric	List Price
White Eco Leather Seat and Back with Polished Aluminum Arms and Base	525.00
IN	



**74613LT** Mid Back Black Eco Leather Chair with Locking Tilt Control and Polished Aluminum Arms and Base

**Overall Size:** 21.25W x 24.25D x 39H

**Seat:** 19W x 17.5D **Back:** 17.75W x 19H **Seat Range:** 18.25 - 21

**Arms to Floor:** 26.75 **Weight:** 44 **UPS Weight:** 133 **COM:** N/A

**Carton:** 33L x 29W x 25H **Cube:** 13.84 **LTL Cube:** 8.8

**Options:** N/A **Features:** 1, 4, 5, 8, 9 **Control:** Locking Tilt

**Notes:** Replaces 74613

GREENGUARD Indoor Air Quality Certified®

Replaces 74613

**NEW**

Fabric	List Price
Black Eco Leather Seat and Back with Polished Aluminum Arms and Base	495.00
IN	



**74123LT** Mid Back White Eco Leather Chair with Locking Tilt Control and Polished Aluminum Arms and Base

**Overall Size:** 21.25W x 24.25D x 39H

**Seat:** 19W x 17.5D **Back:** 17.75W x 19H **Seat Range:** 18.25 - 21

**Arms to Floor:** 26.75 **Weight:** 44 **UPS Weight:** 133 **COM:** N/A

**Carton:** 33L x 29W x 25H **Cube:** 13.84 **LTL Cube:** 8.8

**Options:** N/A **Features:** 1, 4, 5, 8, 9 **Control:** Locking Tilt

**Notes:** Replaces 74123

GREENGUARD Indoor Air Quality Certified®

Replaces 74123

**NEW**

Fabric	List Price
White Eco Leather Seat and Back with Polished Aluminum Arms and Base	495.00
IN	



IN In Stock

LT Lead Time - Transit from CA

SO Special Order

Office Star Products • www.officestarnet.com • 800.950.7262

# Price List Lounge Seating



**SL8471** Black Leather Club Chair with Cherry Finish  
Shipped Assembled with Legs Unmounted  
**Overall Size:** 32W x 33.5D x 30.75H  
**Seat:** 22W x 20D  
**Back:** 22W x 16H **Seat Height:** 17.25  
**Weight:** 62 **UPS Weight:** No UPS **COM:** 5 yds  
**Carton:** 34L x 33W x 30H **Cube:** 19.47  
**Notes:** Rated for 300 lbs. of distributed weight  
**ANSI/BIFMA Tested GREENGUARD Indoor Air Quality Certified®**

Fabric	List Price
Cherry Finish Black Leather	750.00
IN	



**SL8472** Black Leather Loveseat with Cherry Finish  
Shipped Assembled with Legs Unmounted  
**Overall Size:** 58W x 33.5D x 30.75H  
**Seat:** 48W x 20D  
**Back:** 48W x 16H **Seat Height:** 17.25  
**Weight:** 91 **UPS Weight:** No UPS **COM:** 7 yds  
**Carton:** 60L x 34W x 30H **Cube:** 35.41  
**Notes:** Rated for 500 lbs. of distributed weight  
**ANSI/BIFMA Tested GREENGUARD Indoor Air Quality Certified®**

Fabric	List Price
Cherry Finish Black Leather	1125.00
IN	



**SL8473** Black Leather Sofa with Cherry Finish  
Shipped Assembled with Legs Unmounted  
**Overall Size:** 74.5W x 33.5D x 30.75H  
**Seat:** 64W x 20D  
**Back:** 64W x 16H **Seat Height:** 17.25  
**Weight:** 111 **UPS Weight:** No UPS **COM:** 9 yds  
**Carton:** 79L x 34W x 30H **Cube:** 46.63  
**Notes:** Rated for 675 lbs. of distributed weight  
**ANSI/BIFMA Tested GREENGUARD Indoor Air Quality Certified®**

Fabric	List Price
Cherry Finish Black Leather	1425.00
IN	



**SL2271** Eco Leather **BREEZE** Club Chair with Cherry Finish Legs  
Shipped Semi K/D  
**Overall Size:** 32W x 29.5D x 30.5H  
**Seat:** 20.5W x 20D  
**Back:** 21.5W x 17H **Seat Height:** 17.75  
**Weight:** 58 **UPS Weight:** No UPS **COM:** N/A  
**Carton:** 35L x 30W x 21H **Cube:** 12.76  
**Notes:** Rated for 300 lbs. of distributed weight  
**GREENGUARD Indoor Air Quality Certified®**

Fabric	List Price
Cherry Finish EC3 Black Eco Leather	730.00
IN	



**SL2272** Eco Leather **BREEZE** Loveseat with Cherry Finish Legs  
Shipped Semi K/D  
**Overall Size:** 52.5W x 29.5D x 30.5H  
**Seat:** 40.5W x 20D  
**Back:** 41W x 17H **Seat Height:** 17.75  
**Weight:** 80 **UPS Weight:** No UPS **COM:** N/A  
**Carton:** 54L x 30W x 21H **Cube:** 19.68  
**Notes:** Rated for 500 lbs. of distributed weight  
**GREENGUARD Indoor Air Quality Certified®**

Fabric	List Price
Cherry Finish EC3 Black Eco Leather	985.00
IN	



**SL2273** Eco Leather **BREEZE** Sofa with Cherry Finish Legs  
Shipped Semi K/D  
**Overall Size:** 72W x 28.5D x 32H  
**Seat:** 60W x 20D  
**Back:** 60.5W x 17H **Seat Height:** 17.75  
**Weight:** 105 **UPS Weight:** No UPS **COM:** N/A  
**Carton:** 74L x 30W x 21H **Cube:** 26.97  
**Notes:** Rated for 675 lbs. of distributed weight  
**GREENGUARD Indoor Air Quality Certified®**

Fabric	List Price
Cherry Finish EC3 Black Eco Leather	1395.00
IN	



**NAP-992-CHY/NAP-992-MAH/NAP-992-ESP** Leg Chair with Ladder Back & Cherry, Mahogany or Espresso Finish **(2 pack)**

**Overall Size:** 23W x 23D x 32H

**Seat:** 20W x 18.5D **Back:** 18.5W x 15.5H

**Arms to Floor:** 27 **Weight:** 48 **UPS Weight:** No UPS **COM:** 1 yd per Chair

**Carton:** 39L x 28W x 25H **Cube:** 15.79 **Pack:** 2

**Notes:** *Shipped 2 per Carton Frame Fully Assembled, Seat Cushions Unmounted*

**Notes:**

**Fabric**

Black

A

B

C

R

IN

**List Price**

**4 Pack**

938.00

987.00

1039.00

1094.00

1152.00



**NAP-99-CHY/NAP-99-MAH/NAP-99-ESP** Leg Chair with Ladder Back & Cherry, Mahogany or Espresso Finish **(4 pack)**

**Overall Size:** 23W x 23D x 32H

**Seat:** 20W x 18.5D **Back:** 18.5W x 15.5H

**Arms to Floor:** 27 **Weight:** 92 **UPS Weight:** No UPS **COM:** 1 yd per Chair

**Carton:** 44L x 34W x 26H **Cube:** 22.50 **Pack:** 4

**Notes:** *Shipped 4 per Carton Frame Fully Assembled, Seat Cushions Unmounted*

**Notes:**

**Fabric**

Black

A

B

C

R

IN

**List Price**

**4 Pack**

1876.00

1974.00

2078.00

2188.00

2304.00

**Finish Key**

**MAH** = Mahogany Finish

**CHY** = Cherry Finish

**ESP** = Espresso Finish

# Price List Metal Files

## Metal Files, Storage & Pedestals

All OSP metal units are built with heavy-gauge steel, MIG & TIG welding and powdercoat finishes for long-lasting quality and durability. All files and pedestals include core-removable locks, keys and limited lifetime warranty.

### Lateral Files 36" & 42" Wide

- 2, 3, 4 & 5-drawer models in Black (B), Charcoal (C), Grey (G) & Putty (P)
- Interlock allows only one drawer to open at a time for safety and stability
- Counterweight included on all models for additional stability
- Random-keyed, core-removable locks with replacement cores in multiple numbers available for

### Customized Security

- Standard side-to-side filing of Legal, Letter & A4 files
- Full-extension, steel ball-bearing drawer slides
- Integrated full-width pull design for easy opening of drawers
- Adjustable leg levelers
- Complies with ANSI/BIFMA standard X5.9-2004-Storage Units-Tests, covering 21 different testing sections

Option	Description	List Price
LF-LK1	Lock Core + 2 Keys	\$9
LF-LK2	Lock Housing, Core + 2 Keys - Lateral Files & Mobile (PTC) Pedestals	\$15

### LF236 36" Wide 2 Drawer Lateral File with Core-Removeable Lock & Adjustable Glides

IN



	Finish	List
<b>Overall Max:</b> 36W x 20D x 28H	B Black	\$752
<b>Drawer:</b> 34W x 16D	C Charcoal	
<b>Weight:</b> 139 lbs.	G Light Grey	
<b>Cube:</b> 14.2	P Putty	
<b>Options:</b> Front to Back Rails (LF 100)		
Drawer Sides Cover Rails (LF 120)		
<b>UPS:</b> No Ships Fully Assembled		

### LF336 36" Wide 3 Drawer Lateral File with Core-Removeable Lock & Adjustable Glides

IN



	Finish	List
<b>Overall Max:</b> 36W x 20D x 40H	B Black	\$1095
<b>Drawer:</b> 34W x 16D	C Charcoal	
<b>Weight:</b> 178 lbs.	G Light Grey	
<b>Cube:</b> 20.1	P Putty	
<b>Options:</b> Front to Back Rails (LF 100)		
Drawer Sides Cover Rails (LF 120)		
<b>UPS:</b> No Ships Fully Assembled		

### LF436 36" Wide 4 Drawer Lateral File with Core-Removeable Lock & Adjustable Glides


IN




	Finish	List
<b>Overall Max:</b> 36W x 20D x 52H	B Black	\$1324
<b>Drawer:</b> 34W x 16D	C Charcoal	
<b>Weight:</b> 202 lbs.	G Light Grey	
<b>Cube:</b> 26	P Putty	
<b>Options:</b> Front to Back Rails (LF 100)		
Drawer Sides Cover Rails (LF 120)		
<b>UPS:</b> No Ships Fully Assembled		




## LF536 36" Wide 5 Drawer Lateral File with Core-Removeable Lock, Adjustable Glides & Top Drawer with Open Sides

IN			
		Finish	List
	<b>Overall Max:</b> 36W x 20D x 64H	B Black	\$1815
	<b>Drawer:</b> 34W x 16D	C Charcoal	
	<b>Weight:</b> 260 lbs.	G Light Grey	
	<b>Cube:</b> 32	P Putty	
	<b>Options:</b> Front to Back Rails (LF 100)		
	Drawer Sides Cover Rails (LF 120)		
	<b>UPS:</b> No Ships Fully Assembled		


## LF242 42" Wide 2 Drawer Lateral File with Core-Removeable Lock & Adjustable Glides

IN			
		Finish	List
	<b>Overall Max:</b> 42W x 20D x 28H	B Black	\$828
	<b>Drawer:</b> 40W x 16D	C Charcoal	
	<b>Weight:</b> 159 lbs.	G Light Grey	
	<b>Cube:</b> 16.5	P Putty	
	<b>Options:</b> Front to Back Rails (LF 100)		
	Drawer Sides Cover Rails (LF 120)		
	<b>UPS:</b> No Ships Fully Assembled		


## LF342 42" Wide 3 Drawer Lateral File with Core-Removeable Lock & Adjustable Glides

IN			
		Finish	List
	<b>Overall Max:</b> 42W x 20D x 40H	B Black	\$1215
	<b>Drawer:</b> 40W x 16D	C Charcoal	
	<b>Weight:</b> 195 lbs.	G Light Grey	
	<b>Cube:</b> 23.5	P Putty	
	<b>Options:</b> Front to Back Rails (LF 100)		
	Drawer Sides Cover Rails (LF 120)		
	<b>UPS:</b> No Ships Fully Assembled		

## LF442 42" Wide 4 Drawer Lateral File with Core-Removeable Lock & Adjustable Glides

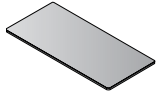
IN			
		Finish	List
	<b>Overall Max:</b> 42W x 20D x 52H	B Black	\$1472
	<b>Drawer:</b> 40W x 16D	C Charcoal	
	<b>Weight:</b> 224 lbs.	G Light Grey	
	<b>Cube:</b> 30.4	P Putty	
	<b>Options:</b> Front to Back Rails (LF 100)		
	Drawer Sides Cover Rails (LF 120)		
	<b>UPS:</b> No Ships Fully Assembled		

## LF542 42" Wide 5 Drawer Lateral File with Core-Removeable Lock, Adjustable Glides & Top Drawer with Open Sides

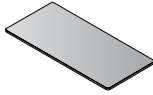
IN			
		Finish	List
	<b>Overall Max:</b> 42W x 20D x 64H	B Black	\$2006
	<b>Drawer:</b> 40W x 16D	C Charcoal	
	<b>Weight:</b> 285 lbs.	G Light Grey	
	<b>Cube:</b> 37.4	P Putty	
	<b>Options:</b> Front to Back Rails (LF 100)		
	Drawer Sides Cover Rails (LF 120)		
	<b>UPS:</b> No Ships Fully Assembled		

# Price List Metal/Laminate

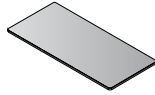
## Tops



**842T26**  
Table Top  
72"x24"  
CU:1.9 WT:44  
List Price: \$410



**842T25**  
Table Top  
60"x24"  
CU:1.6 WT:36.7  
List Price: \$360



**842T24**  
Table Top  
48"x24"  
CU:1.3 WT:29.7  
List Price: \$310

## Frames



**842FM6**  
6' Frame  
CU:4.5 WT:50.6  
List Price: \$500

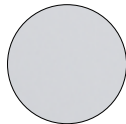


**842FM5**  
5' Frame  
CU:3.7 WT:46.2  
List Price: \$460



**842FM4**  
4' Frame  
CU:2.9 WT:40.7  
List Price: \$420

### Top Color Options:



**G** Grey



**P** Maple

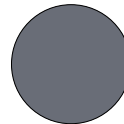


**C** Cherry



**M** Mahogany

### Frame Color Options:



**T** Titanium



**B** Black

## 72 x 24 Tables **IN**

**84226TG**  
6' Titanium Frame with Grey Top  
72"x24x29.5"H Training Table  
CU:6.4 WT: 94.6  
Components: 842FM6-T, 842T26-G

**84226TC**  
6' Titanium Frame with Cherry Top  
72"x24x29.5"H Training Table  
CU:6.4 WT: 94.6  
Components: 842FM6-T, 842T26-C

**84226TM**  
6' Titanium Frame with Mahogany Top  
72"x24x29.5"H Training Table  
CU:6.4 WT: 94.6  
Components: 842FM6-T, 842T26-M

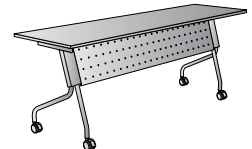
**84226TP**  
6' Titanium Frame with Maple Top  
72"x24x29.5"H Training Table  
CU:6.4 WT: 94.6  
Components: 842FM6-T, 842T26-P

**84226BG**  
6' Black Frame with Grey Top  
72"x24x29.5"H Training Table  
CU:6.4 WT: 94.6  
Components: 842FM6-B, 842T26-G

**84226BC**  
6' Black Frame with Cherry Top  
72"x24x29.5"H Training Table  
CU:6.4 WT: 94.6  
Components: 842FM6-B, 842T26-C

**84226BM**  
6' Black Frame with Mahogany Top  
72"x24x29.5"H Training Table  
CU:6.4 WT: 94.6  
Components: 842FM6-B, 842T26-M

**84226BP**  
6' Black Frame with Maple Top  
72"x24x29.5"H Training Table  
CU:6.4 WT: 94.6  
Components: 842FM6-B, 842T26-P



## 60 x 24 Tables **IN**

**84225TG**  
5' Titanium Frame with Grey Top  
60"x24x29.5"H Training Table  
CU:5.3 WT:82.9  
Components: 842FM5-T, 842T25-G

**84225TC**  
5' Titanium Frame with Cherry Top  
60"x24x29.5"H Training Table  
CU:5.3 WT:82.9  
Components: 842FM5-T, 842T25-C

**84225TM**  
5' Titanium Frame with Mahogany Top  
60"x24x29.5"H Training Table  
CU:5.3 WT:82.9  
Components: 842FM5-T, 842T25-M

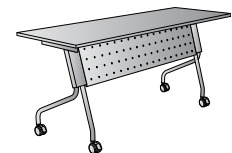
**84225TP**  
5' Titanium Frame with Maple Top  
60"x24x29.5"H Training Table  
CU:5.3 WT:82.9  
Components: 842FM5-T, 842T25-P

**84225BG**  
5' Black Frame with Grey Top  
60"x24x29.5"H Training Table  
CU:5.3 WT:82.9  
Components: 842FM5-B, 842T25-G

**84225BC**  
5' Black Frame with Cherry Top  
60"x24x29.5"H Training Table  
CU:5.3 WT:82.9  
Components: 842FM5-B, 842T25-C

**84225BM**  
5' Black Frame with Mahogany Top  
60"x24x29.5"H Training Table  
CU:5.3 WT:82.9  
Components: 842FM5-B, 842T25-M

**84225BP**  
5' Black Frame with Maple Top  
60"x24x29.5"H Training Table  
CU:5.3 WT:82.9  
Components: 842FM5-B, 842T25-P



## 48 x 24 Tables **IN**

**84224TG**  
4' Titanium Frame with Grey Top  
48"x24x29.5"H Training Table  
CU:4.2 WT: 70.4  
Components: 842FM4-T, 842T24-G

**84224TC**  
4' Titanium Frame with Cherry Top  
48"x24x29.5"H Training Table  
CU:4.2 WT: 70.4  
Components: 842FM4-T, 842T24-C

**84224TM**  
4' Titanium Frame with Mahogany Top  
48"x24x29.5"H Training Table  
CU:4.2 WT: 70.4  
Components: 842FM4-T, 842T24-M

**84224TP**  
4' Titanium Frame with Maple Top  
48"x24x29.5"H Training Table  
CU:4.2 WT: 70.4  
Components: 842FM4-T, 842T24-P

**84224BG**  
4' Black Frame with Grey Top  
48"x24x29.5"H Training Table  
CU:4.2 WT: 70.4  
Components: 842FM4-B, 842T24-G

**84224BC**  
4' Black Frame with Cherry Top  
48"x24x29.5"H Training Table  
CU:4.2 WT: 70.4  
Components: 842FM4-B, 842T24-C

**84224BM**  
4' Black Frame with Mahogany Top  
48"x24x29.5"H Training Table  
CU:4.2 WT: 70.4  
Components: 842FM4-B, 842T24-M

**84224BP**  
4' Black Frame with Maple Top  
48"x24x29.5"H Training Table  
CU:4.2 WT: 70.4  
Components: 842FM4-B, 842T24-P



# Price List ProLine Seating



**54666** 24 Hour Chair with 2-to-1 Synchro Tilt Ergonomic Chair with Seat Slider, 2-Way Adjustable Arms and Titanium Finish Aluminum Base  
**Overall Size:** 25W x 25D x 41.5H  
**Seat:** 20.5W x 18D x 3T **Back:** 19.75W x 19H x 3T **Seat Range:** 19.25 -22.75  
**Arms to Floor:** 26 **Weight:** 57 **UPS Weight:** 65 **COM:** N/A  
**Carton:** 30L x 26W x 15H **Cube:** 6.77 **Features:** 1, 3, 4, 7, 8, 9  
**Control:** 3 Position Locking 2-to-1 Synchro Tilt with Seat Slider  
**Notes:** Fabric Back and Increased Foam Density for Added Durability  
**GREENGUARD Indoor Air Quality Certified®** **"SEAT SLIDER"**

Fabric	List Price
-231 Black Icon	475.00
<b>NEW</b> IN 300 lbs.	



**92343** ProGrid® Back Managers Chair with 2-Way Adjustable Arms, Ratchet Back and Fabric Seat  
**Overall Size:** 26.5W x 25.25D x 39H  
**Seat:** 20.25W x 19D x 3.5T **Back:** 19W x 16.75H **Seat Range:** 18.25-22  
**Arms to Floor:** 25.5 **Weight:** 50 **UPS Weight:** 50 **COM:** 0.75  
**Carton:** 25L x 25W x 14H **Cube:** 5.06 **Options:** CG50, SW70  
**Features:** 1, 4, 11, **Control:** Dual Function  
**Notes:** Dual Wheel Carpet Casters  
**GREENGUARD Indoor Air Quality Certified®**

Fabric	List Price
-30 Coal FreeFlex®	400.00
IN	



**92893** ProGrid® Back Managers Chair with 2-Way Adjustable Arms, Ratchet Back, Seat Slider and Fabric Seat  
**Overall Size:** 26.5W x 25.25D x 39H  
**Seat:** 20.25W x 19D x 3.5T **Back:** 19W x 16.75H **Seat Range:** 18.25-22  
**Arms to Floor:** 25.5 **Weight:** 50 **UPS Weight:** 55 **COM:** 0.75 yds  
**Carton:** 27L x 26W x 14H **Cube:** 5.68 **Options:** CG50, SW70W  
**Features:** 1, 3, 4, 13 **Control:** Multi-Function w/Seat Slider  
**Notes:** Dual Wheel Carpet Casters (Replaces 92393)  
**GREENGUARD Indoor Air Quality Certified®** **"SEAT SLIDER"**

Fabric	List Price
-30 Coal FreeFlex®	425.00
IN	



**90662** ProGrid® High Back Chair with 2-Way Adjustable Arms, 3 Position Locking 2-to-1 Synchro Tilt Control and Seat Slider  
**Overall Size:** 26.5W x 27D x 43.5H  
**Seat:** 20.25W x 19D x 3.5T **Back:** 19W x 22.25H **Seat Range:** 18.25-22  
**Arms to Floor:** 25.5 **Weight:** 51 **UPS Weight:** 63 **COM:** 0.75 yds  
**Carton:** 31L x 26W x 14H **Cube:** 6.53 **Options:** CG50, SW70  
**Features:** 1, 3, 4, 7, 8, 9 **Control:** 3 Position Locking 2-to-1 Synchro Tilt  
**Notes:** Dual Wheel Carpet Casters  
**GREENGUARD Indoor Air Quality Certified®** **"SEAT SLIDER"**

Fabric	List Price
-30 Coal FreeFlex®	425.00
IN	



**92892** ProGrid® High Back Chair with 2-Way Adjustable Arms, Seat Slider, Multi-Function Control and Fixed Back  
**Overall Size:** 26W x 29D x 42H  
**Seat:** 21W x 19.5D x 3T **Back:** 19.5W x 23H **Seat Range:** 18.25-22  
**Arms to Floor:** 25.5 **Weight:** 51 **UPS Weight:** 56 **COM:** 0.75 yds  
**Carton:** 31L x 25W x 13H **Cube:** 5.83 **Options:** CG50, SW70  
**Features:** 1, 3, 4, 13 **Control:** Multi-Function with Fixed Back  
**Notes:** Dual Wheel Carpet Casters  
**GREENGUARD Indoor Air Quality Certified®** **"SEAT SLIDER"**

Fabric	List Price
-30 Coal FreeFlex®	460.00
IN	



**97720** ProGrid® High Back Chair with Fabric Seat, 2-Way Adjustable Arms, Seat Slider and Synchro Control with Infinite Lock and Titanium Finish Base  
**Overall Size:** 28.5W x 24.5D x 43.5H  
**Seat:** 20.5W x 19D x 3.25T **Back:** 21.5W x 24.5H **Seat Range:** 18-20.25  
**Arms to Floor:** 24.75 **Weight:** 59 **UPS Weight:** 81 **COM:** N/A  
**Carton:** 37L x 26W x 15H **Cube:** 8.35 **Options:** CG50, SW70  
**Features:** 1, 3, 4, 7, 8, 9 **Control:** Synchro with Seat Slider  
**Notes:** Dual Wheel Carpet Casters

Fabric	List Price
-30 Coal FreeFlex®	575.00
<b>NEW</b>	
IN	



# Price List ProLine Seating



**97728** ProGrid® High Back Chair with Eco Leather Seat, 2-Way Adjustable Arms, Seat Slider & Synchro Control with Infinite Lock and Titanium Finish Base  
**Overall Size:** 28.5W x 24.5D x 43.5H  
**Seat:** 20.5W x 19D x 3.25T **Back:** 21.5W x 24.5H **Seat Range:** 18-20.25  
**Arms to Floor:** 24.75 **Weight:** 59 **UPS Weight:** 81 **COM:** N/A  
**Carton:** 37L x 26W x 15H **Cube:** 8.35 **Options:** CG50, SW70  
**Features:** 1, 3, 4, 7, 8, 9 **Control:** Synchro with Seat Slider  
**Notes:** Dual Wheel Carpet Casters

Fabric	List Price
-EC3 Black Eco Leather	595.00
<b>IN</b> <b>NEW</b>	



**85640** ProGrid® Back Visitors Chair with Casters and Titanium Finish  
**Overall Size:** 24.5W x 23.25D x 37.75H  
**Seat:** 17W x 19.75D x 2.25T **Back:** 19.75W x 20H **Seat Range:** 18.5 Fixed  
**Arms to Floor:** 26.75 **Weight:** 24 **UPS Weight:** 46 **COM:** 0.5 yds  
**Carton:** 34L x 22W x 11H **Cube:** 4.76 **Options:** N/A  
**Features:** N/A **Control:** N/A  
**Notes:**  
**GREENGUARD Indoor Air Quality Certified®**

Fabric	List Price
-30 Coal FreeFlex®	260.00
<b>IN</b> <b>NEW</b>	



**85670** ProGrid® Back Visitors Chair with Titanium Finish  
**Overall Size:** 24.5W x 23.25D x 37.75H  
**Seat:** 17W x 19.75D x 2.25T **Back:** 19.75W x 20H **Seat Range:** 18.5 Fixed  
**Arms to Floor:** 26.75 **Weight:** 24 **UPS Weight:** 46 **COM:** 0.5 yds  
**Carton:** 34L x 22W x 11H **Cube:** 4.76 **Options:** N/A  
**Features:** N/A **Control:** N/A  
**Notes:**  
**GREENGUARD Indoor Air Quality Certified®**

Fabric	List Price
-30 Coal FreeFlex®	250.00
<b>IN</b> <b>NEW</b>	



**84510** ProGrid® Back Visitors Chair with Arms and Titanium Finish Frame  
**Overall Size:** 25.5W x 24D x 36.5H  
**Seat:** 18.5W x 19.5D x 3.25T **Back:** 20.75W x 21.75H **Seat Range:** 18.5 Fixed  
**Arms to Floor:** 26 **Weight:** 23 **UPS Weight:** 44 **COM:** 0.5 yds  
**Carton:** 34L x 21W x 11H **Cube:** 4.54 **Options:** N/A  
**Features:** N/A **Control:** N/A  
**Notes:** Stacks with 84540  
**GREENGUARD Indoor Air Quality Certified®**

Fabric	List Price
-30 Coal FreeFlex®	290.00
<b>IN</b>	



**84540** ProGrid® Back Visitors Chair with Arms, Casters and Titanium Finish Frame  
**Overall Size:** 25.5W x 24D x 36.5H  
**Seat:** 18.5W x 19.5D x 3.25T **Back:** 20.75W x 21.75H **Seat Range:** 18.5 Fixed  
**Arms to Floor:** 26 **Weight:** 23 **UPS Weight:** 44 **COM:** 0.5 yds  
**Carton:** 34L x 21W x 11H **Cube:** 4.54 **Options:** N/A  
**Features:** N/A **Control:** N/A  
**Notes:** Stacks with 84510  
**GREENGUARD Indoor Air Quality Certified®**

Fabric	List Price
-30 Coal FreeFlex®	300.00
<b>IN</b>	



**86724** ProGrid® Back Visitors Chair with Straight Leg Titanium Finish Frame  
**Overall Size:** 20.25W x 24D x 33.25H  
**Seat:** 18W x 19D x 3T **Back:** 19W x 15H **Seat Range:** 17.25 Fixed  
**Arms to Floor:** N/A **Weight:** 19 **UPS Weight:** 29 **COM:** 0.5 yds  
**Carton:** 27L x 21W x 9H **Cube:** 2.95 **Options:** N/A  
**Features:** N/A **Control:** N/A  
**Notes:** Stacking  
**GREENGUARD Indoor Air Quality Certified®**

Fabric	List Price
-30 Coal FreeFlex®	205.00
<b>IN</b>	

# Price List ProLine Seating



**86725** ProGrid® Back Visitors Chair with Sled Base Titanium Finish Frame

**Overall Size:** 20.25W x 24D x 33.25H  
**Seat:** 18.5W x 19D x 3T **Back:** 19W x 15H **Seat Range:** 18 Fixed  
**Arms to Floor:** N/A **Weight:** 20 **UPS Weight:** 29 **COM:** 0.5 yds  
**Carton:** 27L x 21W x 9H **Cube:** 2.95 **Options:** N/A  
**Features:** N/A **Control:** N/A  
**Notes:** Stacking  
**GREENGUARD Indoor Air Quality Certified®**

Fabric	List Price
-30 Coal FreeFlex®	225.00
IN	



**8455** Visitors Chair with Vintilated Plastic Back and Black FreeFlex® -30 Seat with Chrome Sled Base

**Overall Size:** 20.25W x 24D x 33.25H  
**Seat:** 18.5W x 19D x 3T **Back:** 19W x 15H **Seat Range:** 17.75 Fixed  
**Weights:** 248/65/35 **UPS Weights:** 136 (2 pack Only)  
**Carton:** 41L x 27W x 22H (4 Pack) 37L x 25W x 22H (2 Pack)  
**Cube:** 41.42/14.09/11.77  
**Notes:** Stacking and Ganging Sold in 20 Bulk pack w/Dolly, 4 pack or 2 Pack **GREENGUARD Indoor Air Quality Certified®**

Fabric	List Price
-30 Coal FreeFlex®	
8455C20-30 (20 Pack w/Dolly)	2530.00
8455C4-30 (4 Pack)	540.00
8455C2-30 (2 Pack)	290.00
IN	



**86710** ProGrid® Contour Back Titanium Finish Visitors Chair with Arms

**Overall Size:** 25W x 23D x 34H  
**Seat:** 18W x 20D x 2T **Back:** 20W x 14.5H **Seat Range:** 18 Fixed  
**Arms to Floor:** 26.75 **Weight:** 20 **UPS Weight:** 38 **COM:** 1.0 yds  
**Carton:** 32L x 21W x 10H **Cube:** 3.89 **Options:** N/A  
**Features:** N/A **Control:** N/A  
**Notes:** Stacks with Model 86740  
**GREENGUARD Indoor Air Quality Certified®**

Fabric	List Price
-30 Coal FreeFlex®	205.00
IN	



**86740** Titanium Finish Rolling Visitors Chair with Casters, Arms and ProGrid® Contour Back

**Overall Size:** 25W x 23D x 34H  
**Seat:** 18W x 20D x 2T **Back:** 20W x 14.5H **Seat Range:** 18 Fixed  
**Arms to Floor:** 26.75 **Weight:** 20 **UPS Weight:** 38 **COM:** 0.5 yds  
**Carton:** 32L x 21W x 10H **Cube:** 3.89 **Options:** N/A  
**Features:** N/A **Control:** N/A  
**Notes:** Stacks with Models 82710 and 82720  
**GREENGUARD Indoor Air Quality Certified®**

Fabric	List Price
-30 Coal FreeFlex®	215.00
IN	



**8610** Titanium Finish Visitors Chair with Arms and Ventilated Plastic Wrap Around Back

**Overall Size:** 25W x 23D x 34H  
**Seat:** 18W x 20D x 2T **Back:** 20W x 14.5H **Seat Range:** 18 Fixed  
**Arms to Floor:** 26.75 **Weight:** 19 **UPS Weight:** 38 **COM:** 0.5 yds  
**Carton:** 32L x 21W x 10H **Cube:** 3.89 **Options:** N/A  
**Features:** N/A **Control:** N/A  
**Notes:** Stacks with Models 8620 and 8640  
**GREENGUARD Indoor Air Quality Certified®**

Fabric	List Price
-30 Coal FreeFlex®	185.00
IN	



**8620** Titanium Finish Armless Visitors Chair with Ventilated Plastic Wrap Around Back

**Overall Size:** 20.5W x 23D x 34H  
**Seat:** 18W x 20D x 2T **Back:** 20W x 14.5H **Seat Range:** 18 Fixed  
**Arms to Floor:** N/A **Weight:** 17 **UPS Weight:** 28 **COM:** 0.5 yds  
**Carton:** 26L x 21W x 9H **Cube:** 2.84 **Options:** N/A  
**Features:** N/A **Control:** N/A  
**Notes:** Stacks with Models 8610 and 8640  
**GREENGUARD Indoor Air Quality Certified®**

Fabric	List Price
-30 Coal FreeFlex®	170.00
IN	



# Price List

## ProLine Seating



**8640** Titanium Finish Rolling Visitors Chair with Casters, Arms and Ventilated Plastic Wrap Around Back

**Overall Size:** 25W x 23D x 34H

**Seat:** 18W x 20D x 2T **Back:** 20W x 14.5H **Seat Range:** 18 Fixed

**Arms to Floor:** 26.75 **Weight:** 19 **UPS Weight:** 38 **COM:** 0.5 yds

**Carton:** 32L x 21W x 10H **Cube:** 3.89 **Options:** N/A

**Features:** N/A **Control:** N/A

**Notes:** Stacks with Models 8610 and 8620

GREENGUARD Indoor Air Quality Certified®

**Fabric**  
-30 Coal  
FreeFlex®

**List Price**

195.00

IN



**84440** Deluxe Titanium Finish Folding Chair with Casters, Arms and ProGrid® Back (2 Pack)

**Overall Size:** 24W x 23.75D x 36.5H

**Seat:** 18.5W x 19D x 2.5T **Back:** 21.5W x 20.75H **Seat Range:** 19.25 Fixed

**Arms to Floor:** 26.75 **Weight:** 56 **UPS Weight:** 91 **COM:** 0.5 yds

**Carton:** 26L x 24W x 26H **Cube:** 9.38 **Options:** N/A

**Features:** N/A **Control:** N/A

**Notes:** Seat Folds up for Horizontal Nesting

Sold in 2 pack Only GREENGUARD Indoor Air Quality Certified®

**Fabric**  
-30 Coal  
FreeFlex®

**List Price**

650.00

IN



**84330** Titanium Finish Folding Chair with Arms, Casters and Ventilated Plastic Wrap Around Back (2 Pack)

**Overall Size:** 24.5W x 22D x 34H

**Seat:** 18W x 19D x 2.5T **Back:** 18.5W x 14.25H **Seat Range:** 19.25 Fixed

**Arms to Floor:** 26.75 **Weight:** 55 **UPS Weight:** 91 **COM:** 0.5 yds

**Carton:** 26L x 26W x 24H **Cube:** 9.38 **Options:** N/A

**Features:** N/A **Control:** N/A

**Notes:** Seat Folds up for Horizontal Nesting

Sold in 2 pack Only GREENGUARD Indoor Air Quality Certified®

**Fabric**  
-30 Coal  
FreeFlex®

**List Price**

470.00

IN

# Price List WorkSmart Seating



**3121** Mid Back 2-to-1 Synchro Tilt Ergonomic Chair with 2-Way Adjustable Soft Padded Arms and Molded Foam  
**Overall Size:** 27.25W x 25.25D x 41.5H  
**Seat:** 20.5W x 19D x 3.5T **Back:** 19.5W x 21H x 3.5T **Seat Range:** 18.5 -22.25  
**Arms to Floor:** 24.75 **Weight:** 46 **UPS Weight:** 57 **COM:** 1.0 yds  
**Carton:** 29L x 25W x 14H **Cube:** 5.87 **Options:** CG50, SW70  
**Features:** 1, 4, 7, 8, 9 **Control:** 2-to-1 Synchro Tilt  
**Notes:** **Fabric Back (3121FB)** A&B add \$5.00 to Net Price C&R add \$10.00 to Net Price (COM 1.5 yds) **GREENGUARD Indoor Air Quality Certified®**

Fabric	List Price
-231 Black Icon	370.00
<b>IN</b>	



**43808** Multi Function Ergonomic Chair with Ratchet Back and Adjustable Soft Padded Arms  
**Overall Size:** 25W x 25.5D x 34.25H  
**Seat:** 20W x 20D x 3.5T **Back:** 19W x 19H x 3.5T **Seat Range:** 17.5 -21  
**Arms to Floor:** 25.5 **Weight:** 53 **UPS Weight:** 57 **COM:** 1.25 yds  
**Carton:** 27L x 25W x 15H **Cube:** 5.86 **Options:** CG50, SW70, SK1, SK5  
**Features:** 1, 2, 4, 8, 13 **Control:** Multi Function  
**Notes:** **GREENGUARD Indoor Air Quality Certified®**

Fabric	List Price
-231 Black Icon	438.00
<b>IN</b>	



**EC3393** Eco Leather Executive Chair  
**Overall Size:** 23W x 25D x 40.75H  
**Seat:** 19W x 19D x 3T **Back:** 19W x 23H x 3T **Seat Range:** 16.75 -20.5  
**Arms to Floor:** 24 **Weight:** 32 **UPS Weight:** 37 **COM:** N/A  
**Carton:** 25L x 24W x 11H **Cube:** 3.81 **Options:** CG50, SW70  
**Features:** 1, 4, 5, 8, 9 **Control:** Locking Tilt  
**Notes:**

Fabric	List Price
-EC3 Eco Leather Black Only	200.00
<b>IN NEW</b>	



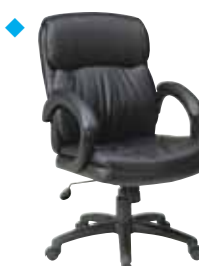
**EC22070** High Back Eco Leather Executive Chair  
**Overall Size:** 26.5W x 27D x 45.5H  
**Seat:** 21W x 18.5D x 3T **Back:** 21W x 25.5H x 5T **Seat Range:** 17.5 -21.5  
**Arms to Floor:** 25 **Weight:** 38 **UPS Weight:** 56 **COM:** N/A  
**Carton:** 30L x 24W x 14H **Cube:** 5.83 **Options:** CG50, SW70  
**Features:** 1, 4, 5, 8, 9 **Control:** Locking Tilt  
**Notes:**

Fabric	List Price
-EC3 Eco Leather Black Only	265.00
<b>IN</b>	



**EC9230** High Back Eco Leather Executive Chair with Padded Arms  
**Overall Size:** 25W x 29D x 45.25H  
**Seat:** 20W x 19D x 4T **Back:** 20.5W x 25.5H x 4T **Seat Range:** 17.75 -21.5  
**Arms to Floor:** 27.5 **Weight:** 42 **UPS Weight:** 65 **COM:** N/A  
**Carton:** 32L x 26W x 14H **Cube:** 6.74 **Options:** CG50, SW70  
**Features:** 1, 4, 5, 8, 9 **Control:** Locking Tilt  
**Notes:** **Replaces EC1220**

Fabric	List Price
-EC3 Eco Leather Black Only	325.00
<b>IN</b>	



**EC9231** Mid Back Eco Leather Executive Chair with Padded Arms  
**Overall Size:** 24W x 28.75D x 41.5H  
**Seat:** 20W x 19D x 4T **Back:** 20W x 21.5H x 4T **Seat Range:** 17.75 -21.5  
**Arms to Floor:** 27.5 **Weight:** 39 **UPS Weight:** 56 **COM:** N/A  
**Carton:** 28L x 24W x 15H **Cube:** 5.83 **Options:** CG50, SW70  
**Features:** 1, 4, 5, 8, 9 **Control:** Locking Tilt  
**Notes:** **Replaces EC1221**

Fabric	List Price
-EC3 Eco Leather Black Only	300.00
<b>IN</b>	

◆ Denotes General Chair Warranty



# Price List WorkSmart Seating



**EC9235** Eco Leather Visitors Chair with Padded Arms and Sled Base

**Overall Size:** 24.5W x 26.5D x 38.25H  
**Seat:** 20W x 19D x 4T **Back:** 20W x 21.25H x 4T **Seat Range:** 18.5 Fixed  
**Arms to Floor:** 28 **Weight:** 36 **UPS Weight:** 52 **COM:** N/A  
**Carton:** 28L x 22W x 15H **Cube:** 5.34 **Options:** N/A  
**Features:** N/A **Control:** N/A  
**Notes:**

**Replaces EC1225**

Fabric	List Price
-EC3 Eco Leather Black Only	280.00

IN



**EC6582** Executive High Back Eco Leather Chair with Two Tone Stitching

**Overall Size:** 26.75W x 26.25D x 48.5H  
**Seat:** 18.75W x 19.75D x 4T **Back:** 18.75W x 30H x 4.75T **Seat Range:** 17.25 -20.75  
**Arms to Floor:** 28.75 **Weight:** 42 **UPS Weight:** 63 **COM:** N/A  
**Carton:** 31L x 26W x 14H **Cube:** 6.53 **Options:** CG50, SW70  
**Features:** 1, 4, 5, 8, 9 **Control:** Locking Tilt  
**Notes:**

Fabric	List Price
-EC3 Eco Leather Black Only	325.00

IN



**EC6583** Executive High Back Eco Leather Chair with Match Stitching

**Overall Size:** 26.75W x 26.25D x 48.5H  
**Seat:** 18.75W x 19.75D x 4T **Back:** 18.75W x 30H x 4.75T **Seat Range:** 17.25 -20.75  
**Arms to Floor:** 28.75 **Weight:** 42 **UPS Weight:** 63 **COM:** N/A  
**Carton:** 31L x 26W x 14H **Cube:** 6.53 **Options:** CG50, SW70  
**Features:** 1, 4, 5, 8, 9 **Control:** Locking Tilt  
**Notes:**

Fabric	List Price
-EC3 Eco Leather Black Only	325.00

IN



**ECH66301-EC1/ECH66306-EC3** Executive Eco Leather Chair with Padded Arms and Coated Base

**Overall Size:** 27W x 28D x 48H  
**Seat:** 21.5W x 19D x 4.5T **Back:** 22W x 28H x 5T **Seat Range:** 17 -19.75  
**Arms to Floor:** 26.5 **Weight:** 48 **UPS Weight:** 70 **COM:** N/A  
**Carton:** 32L x 26W x 15H **Cube:** 7.22 **Options:** CG50, SW70  
**Features:** 1, 4, 5, 8, 9 **Control:** Locking Tilt  
**Notes:**

Frame/Fabric	List Price
ECH66301-EC1 Cocoa/Esspresso	460.00
ECH66306-EC3 Silver/Black	

IN



**ECH67101-EC1/ECH67106-EC3** Executive Eco Leather Chair with Padded Arms and Coated Base

**Overall Size:** 25.5W x 30D x 47.25H  
**Seat:** 20.5W x 18.5D x 4.75T **Back:** 22.5W x 26.25H x 5.5T **Seat Range:** 17 -19.75  
**Arms to Floor:** 26.75 **Weight:** 47 **UPS Weight:** 70 **COM:** N/A  
**Carton:** 32L x 26W x 15H **Cube:** 7.22 **Options:** CG50, SW70  
**Features:** 1, 4, 5, 8, 9 **Control:** Locking Tilt  
**Notes:**

Frame/Fabric	List Price
ECH67101-EC1 Cocoa/Esspresso	460.00
ECH67106-EC3 Silver/Black	

IN



**ECH68807-EC3** Executive Eco Leather Chair with Padded Arms and Coated Base

**Overall Size:** 25.75W x 30D x 47H  
**Seat:** 21W x 20D x 5.25T **Back:** 21W x 25.75H x 5T **Seat Range:** 20 -22.75  
**Arms to Floor:** 27.75 **Weight:** 49 **UPS Weight:** 70 **COM:** N/A  
**Carton:** 32L x 26W x 15H **Cube:** 7.22 **Options:** CG50, SW70  
**Features:** 1, 4, 5, 8, 9 **Control:** Locking Tilt  
**Notes:**

Frame/Fabric	List Price
ECH68807-EC3 Titanium/Black	460.00

IN

◆ Denotes General Chair Warranty



# Price List WorkSmart Seating



**ECH83501-EC1/ECH83507-EC3** Executive Eco Leather Chair with Padded Arms and Coated Base  
**Overall Size:** 25W x 30.5D x 45.5H  
**Seat:** 21.25W x 22D x 5.5T **Back:** 21.25W x 28.5H x 5.75T **Seat Range:** 19 -22  
**Arms to Floor:** 28 **Weight:** 47 **UPS Weight:** 68 **COM:** N/A  
**Carton:** 29L x 26W x 16H **Cube:** 6.98 **Options:** CG50, SW70  
**Features:** 1, 4, 5, 8, 9 **Control:** Locking Tilt  
**Notes:** Replaces DHL7576

Frame/Fabric	List Price
<b>ECH83501-EC1</b> Cocoa/Espresso	450.00
<b>ECH83507-EC3</b> Titanium/Black	
<b>IN</b>	



**EX8124** Deluxe Leather Visitors Chair with Steel Base and Padded Arms  
**Overall Size:** 25.5W x 27.5D x 34.75H  
**Seat:** 20.5W x 19D x 4T **Back:** 20.5W x 17H x 3.5T **Seat Range:** 19 Fixed  
**Arms to Floor:** 25.75 **Weight:** 31 **UPS Weight:** 52 **COM:** N/A  
**Carton:** 27L x 23W x 15H **Cube:** 5.39 **Options:** N/A  
**Features:** N/A **Control:** N/A  
**Notes:**

Fabric	List Price
Deluxe Coated Leather -3 Black	315.00
<b>IN</b>	



**FL605** Faux Leather Managers Chair with Padded Arms  
**Overall Size:** 26W x 26D x 40.5H  
**Seat:** 20W x 18D x 4T **Back:** 19.5W x 21H x 4T **Seat Range:** 18.75 -21.75  
**Arms to Floor:** 26.5 **Weight:** 43 **UPS Weight:** 51 **COM:** N/A  
**Carton:** 27L x 24W x 14H **Cube:** 5.25 **Options:** CG50, SW70  
**Features:** 1, 4, 5, 8, 9 **Control:** Locking Tilt  
**Notes:** Replaces EC605

Fabric	List Price
Faux Leather -U6 Black	250.00
<b>IN</b>	



**FL642** Oversized Executive Faux Leather Chair with Padded Arms and Mid Pivot Knee Tilt Control  
**Overall Size:** 25.5W x 27D x 47.75H  
**Seat:** 21.25W x 20D x 4.25T **Back:** 20.5W x 28.25H x 4.25T **Seat Range:** 17.5 -20.75  
**Arms to Floor:** 28.5 **Weight:** 51 **UPS Weight:** 65 **COM:** N/A  
**Carton:** 30L x 26W x 15H **Cube:** 6.77 **Options:** CG50, SW70  
**Features:** 1, 4, 6, 8, 9 **Control:** Mid Pivot Knee Tilt  
**Notes:**

Fabric	List Price
Faux Leather -U6 Black -U2 Chocolate	375.00
<b>IN</b>	



**FL644** Faux Leather Task Chair with Arms  
**Overall Size:** 27W x 26D x 42.5H  
**Seat:** 21W x 19.5D x 4T **Back:** 20.25W x 23H x 3.5T **Seat Range:** 18.75 -21.5  
**Arms to Floor:** 25.75 **Weight:** 44 **UPS Weight:** 57 **COM:** N/A  
**Carton:** 28L x 26W x 14H **Cube:** 5.90 **Options:** CG50, SW70  
**Features:** 1, 4, 5, 8, 9 **Control:** Locking Tilt  
**Notes:**

Fabric	List Price
Faux Leather -U6 Black -U2 Chocolate	315.00
<b>IN</b>	



**FL9097** Oversized Faux Leather Executive Chair with Padded Loop Arms  
**Overall Size:** 26W x 31D x 46H  
**Seat:** 23W x 21D x 4T **Back:** 21W x 29H x 5T **Seat Range:** 18.5 -22  
**Arms to Floor:** 28 **Weight:** 42 **UPS Weight:** 68 **COM:** N/A  
**Carton:** 31L x 26W x 15H **Cube:** 6.99 **Options:** CG50, SW70  
**Features:** 1, 4, 5, 8, 9 **Control:** Locking Tilt  
**Notes:**

Fabric	List Price
Faux Leather -U6 Black	375.00
<b>NEW</b> <b>IN</b>	

◆ Denotes General Chair Warranty

# Price List WorkSmart Seating



**FLH80001-U1/FLH80006-U6** Deluxe High Back Faux Leather Chair with Coated Frame and Padded Arms

**Overall Size:** 25.25W x 25.5D x 46H  
**Seat:** 20.5W x 18D x 4T **Back:** 20.5W x 25H x 4T **Seat Range:** 19.25 -21.75  
**Arms to Floor:** 27.75 **Weight:** 44 **UPS Weight:** 63 **COM:** N/A  
**Carton:** 31L x 26W x 14H **Cube:** 6.53 **Options:** CG50, SW70  
**Features:** 1, 4, 5, 8, 9 **Control:** Locking Tilt  
**Notes:**

Frame/Fabric	List Price
<b>FLH80001-U1</b> Cocoa/Espresso <b>FLH80006-U6</b> Silver/Black	400.00
IN	



**FLH80011-U1/FLH80016-U6** Deluxe Mid Back Faux Leather Chair with Coated Frame and Padded Arms

**Overall Size:** 24.75W x 27D x 42.25H  
**Seat:** 20.5W x 18D x 4T **Back:** 20.5W x 22H x 3.5T **Seat Range:** 19.25 -21.75  
**Arms to Floor:** 28 **Weight:** 41 **UPS Weight:** 55 **COM:** N/A  
**Carton:** 27L x 26W x 14H **Cube:** 5.68 **Options:** CG50, SW70  
**Features:** 1, 4, 5, 8, 9 **Control:** Locking Tilt  
**Notes:**

Frame/Fabric	List Price
<b>FLH80011-U1</b> Cocoa/Espresso <b>FLH80016-U6</b> Silver/Black	360.00
IN	



**FL89675** Faux Leather Managers Chair with Flip Arms

**Overall Size:** 27W x 26D x 42H  
**Seat:** 20W x 20D x 4T **Back:** 19.75W x 22H x 4T **Seat Range:** 17.25 -21  
**Arms to Floor:** 24.25 **Weight:** 38 **UPS Weight:** 44 **COM:** N/A  
**Carton:** 26L x 23W x 13H **Cube:** 4.49 **Options:** CG50, SW70  
**Features:** 1, 4, 5, 8, 9 **Control:** Locking Tilt  
**Notes:**

Fabric	List Price
Faux Leather -U6 Black	265.00
IN <b>NEW</b>	



**FL1055** Faux Leather Visitors Chair with Sled Base

**Overall Size:** 23W x 23.75D x 34H  
**Seat:** 20W x 20D x 4T **Back:** 20W x 14H x 3T **Seat Range:** 18.5 Fixed  
**Arms to Floor:** 26.25 **Weight:** 28 **UPS Weight:** 40 **COM:** N/A  
**Carton:** 34L x 21W x 10H **Cube:** 4.13 **Options:** N/A  
**Features:** N/A **Control:** N/A  
**Notes:** Replaces EX1055

Fabric	List Price
Faux Leather -U6 Black Only	210.00
IN	



**WST51LF** Left Arm Facing Wall Street Modular Component with Chrome Base

**Overall Size:** 27W x 28D x 30H  
**Seat:** 23W x 22D **Back:** 23W x 16H **Seat Range:** 17.5 Fixed  
**Arms to Floor:** 26 **Weight:** 53 **UPS Weight:** 89 **COM:** N/A  
**Carton:** 29L x 25W x 22H **Cube:** 9.23 **Options:** N/A  
**Features:** N/A **Control:** N/A  
**Notes:** Use as Part of Sofa, Loveseat or Sectional  
**GREENGUARD Indoor Air Quality Certified®**

Fabric	List Price
Faux Leather -B18 Black -E34 Espresso	475.00
IN	



**WST51N** Armless Wall Street Modular Component with Chrome Base

**Overall Size:** 23W x 28D x 30H  
**Seat:** 23W x 22D **Back:** 23W x 16H **Seat Range:** 17.5 Fixed  
**Arms to Floor:** N/A **Weight:** 39 **UPS Weight:** 65 **COM:** N/A  
**Carton:** 26L x 25W x 18H **Cube:** 6.77 **Options:** N/A  
**Features:** N/A **Control:** N/A  
**Notes:** Use as Stand Alone or Part of Sofa, Loveseat or Sectional  
**GREENGUARD Indoor Air Quality Certified®**

Fabric	List Price
Faux Leather -B18 Black -E34 Espresso	395.00
IN	

◆ Denotes General Chair Warranty



**WST51RF** Right Arm Facing Wall Street Modular Component with Chrome Base

**Overall Size:** 27W x 28D x 30H  
**Seat:** 23W x 22D **Back:** 23W x 16H **Seat Range:** 17.5 Fixed  
**Arms to Floor:** 26 **Weight:** 53 **UPS Weight:** 89 **COM:** N/A  
**Carton:** 29L x 25W x 22H **Cube:** 9.23 **Options:** N/A  
**Features:** N/A **Control:** N/A  
**Notes:** Use as Part of Sofa, Loveseat or Sectional  
**GREENGUARD Indoor Air Quality Certified®**

Fabric	List Price
Faux Leather -B18 Black -E34 Espresso	475.00



**WST51C** Corner Wall Street Modular Component with Chrome Base

**Overall Size:** 28W x 28D x 30H  
**Seat:** 23W x 22D **Back:** 23W x 16H **Seat Range:** 17.5 Fixed  
**Arms to Floor:** N/A **Weight:** 54 **UPS Weight:** 105 **COM:** N/A  
**Carton:** 29L x 26W x 25H **Cube:** 10.90 **Options:** N/A  
**Features:** N/A **Control:** N/A  
**Notes:** Use as Part of Corner Sectional  
**GREENGUARD Indoor Air Quality Certified®**

Fabric	List Price
Faux Leather -B18 Black -E34 Espresso	530.00



**WST51A** Wall Street Arm Chair with Chrome Base

**Overall Size:** 30.5W x 28D x 30H  
**Seat:** 23W x 22D **Back:** 23W x 16H **Seat Range:** 17.5 Fixed  
**Arms to Floor:** 26 **Weight:** 64 **UPS Weight:** 112 **COM:** N/A  
**Carton:** 31L x 26W x 25H **Cube:** 11.66 **Options:** N/A  
**Features:** N/A **Control:** N/A  
**Notes:** Stand Alone  
**GREENGUARD Indoor Air Quality Certified®**

Fabric	List Price
Faux Leather -B18 Black -E34 Espresso	530.00



**PAC51** Pacific Arm Chair in Black Vinyl with Chrome Finish Legs

**Overall Size:** 32W x 31D x 29.5H  
**Seat:** 23W x 20.5D **Back:** 23.5W x 12H **Seat Range:** 18 Fixed  
**Arms to Floor:** 24.5 **Weight:** 67 **UPS Weight:** 125 **COM:** N/A  
**Carton:** 30L x 30W x 25H **Cube:** 13.02 **Options:** N/A  
**Features:** N/A **Control:** N/A  
**Notes:**

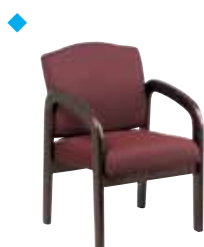
Fabric	List Price
Vinyl -V18 Black	425.00



**PAC52** Pacific Loveseat in Black Vinyl with Chrome Finish Legs

**Overall Size:** 51.5W x 31D x 29.5H  
**Seat:** 42W x 20.5D **Back:** 42.25W x 12H **Seat Range:** 18 Fixed  
**Arms to Floor:** 24.5 **Weight:** 92 **UPS Weight:** 171 **COM:** N/A  
**Carton:** 43L x 31W x 23H **Cube:** 17.74 **Options:** N/A  
**Features:** N/A **Control:** N/A  
**Notes:**

Fabric	List Price
Vinyl -V18 Black	580.00



**WD383** Mahogany Finish Visitors Chair

**Overall Size:** 23W x 25.5D x 33.5H  
**Seat:** 21W x 18D x 4T **Back:** 20W x 17.5H x 3T **Seat Range:** 18 Fixed  
**Arms to Floor:** 26.75 **Weight:** 27 **UPS Weight:** 42 **COM:** 1.75  
**Carton:** 28L x 22W x 12H **Cube:** 4.27 **Options:** N/A  
**Features:** N/A **Control:** N/A  
**Notes:** No Tools Required for Assembly

Fabric	List Price
-316 Taupe, -318 Ruby, -320 Charcoal, or -U6 Black Faux Leather	265.00

◆ Denotes General Chair Warranty



# Price List WorkSmart Seating

	<p><b>WD387</b> Cherry Finish Visitors Chair</p> <p><b>Overall Size:</b> 23W x 25.5D x 33.5H  <b>Seat:</b> 21W x 18D x 4T <b>Back:</b> 20W x 17.5H x 3T <b>Seat Range:</b> 18 Fixed  <b>Arms to Floor:</b> 26.75 <b>Weight:</b> 27 <b>UPS Weight:</b> 42 <b>COM:</b> 1.75  <b>Carton:</b> 28L x 22W x 12H <b>Cube:</b> 4.27 <b>Options:</b> N/A  <b>Features:</b> N/A <b>Control:</b> N/A  <b>Notes:</b> No Tools Required for Assembly</p>	<p><b>Fabric</b></p> <p>-317 Midnight Blue,            -316 Taupe, -320            Charcoal or -J6 Black            Faux Leather</p>	<p><b>List Price</b></p> <p>265.00</p>
	<p><b>WD388</b> Espresso Finish Visitors Chair</p> <p><b>Overall Size:</b> 23W x 25.5D x 33.5H  <b>Seat:</b> 21W x 18D x 4T <b>Back:</b> 20W x 17.5H x 3T <b>Seat Range:</b> 18 Fixed  <b>Arms to Floor:</b> 26.75 <b>Weight:</b> 27 <b>UPS Weight:</b> 42 <b>COM:</b> 1.75  <b>Carton:</b> 28L x 22W x 12H <b>Cube:</b> 4.27 <b>Options:</b> N/A  <b>Features:</b> N/A <b>Control:</b> N/A  <b>Notes:</b> No Tools Required for Assembly</p>	<p><b>Fabric</b></p> <p>-316 Taupe or -J6            Black Faux Leather</p>	<p><b>List Price</b></p> <p>265.00</p>
	<p><b>TV230</b> Traditional Guest Chair with Wrap Around Back and Mahogany Finish Frame</p> <p><b>Overall Size:</b> 24.5W x 24.5D x 30H  <b>Seat:</b> 24.25W x 20.25D x 4T <b>Back:</b> 23W x 6.75H x 3.5T <b>Seat Range:</b> 18.5 Fixed  <b>Arms to Floor:</b> 24.5 <b>Weight:</b> 25 <b>UPS Weight:</b> 37 <b>COM:</b> N/A  <b>Carton:</b> 28L x 26W x 9H <b>Cube:</b> 3.79 <b>Options:</b> N/A  <b>Features:</b> N/A <b>Control:</b> N/A  <b>Notes:</b></p>	<p><b>Fabric</b></p> <p>-JT4 Jamestown            Vinyl or -3 Black            Leather with            Mahogany Finish            Frame</p>	<p><b>List Price</b></p> <p>200.00</p>
	<p><b>TV231</b> Traditional Guest Chair with Wrap Around Back, Casters and Mahogany Finish Frame</p> <p><b>Overall Size:</b> 24.5W x 24.5D x 30H  <b>Seat:</b> 24.25W x 20.25D x 4T <b>Back:</b> 23W x 6.75H x 3.5T <b>Seat Range:</b> 18.5 Fixed  <b>Arms to Floor:</b> 24.5 <b>Weight:</b> 25 <b>UPS Weight:</b> 37 <b>COM:</b> N/A  <b>Carton:</b> 28L x 26W x 9H <b>Cube:</b> 3.79 <b>Options:</b> N/A  <b>Features:</b> N/A <b>Control:</b> N/A  <b>Notes:</b></p>	<p><b>Fabric</b></p> <p>-JT4 Jamestown            Vinyl or -3 Black            Leather with            Mahogany Finish            Frame</p>	<p><b>List Price</b></p> <p>210.00</p>
	<p><b>DC2990</b> Deluxe Mesh Back Drafting Chair with Adjustable Footring, Black Icon Fabric Seat and Dual Wheel Carpet Casters</p> <p><b>Overall Size:</b> 26W x 23D x 50.25H  <b>Seat:</b> 19W x 18.25D x 3T <b>Back:</b> 18W x 16.75H <b>Seat Range:</b> 24.25 - 33.75  <b>Arms to Floor:</b> N/A <b>Weight:</b> 31 <b>UPS Weight:</b> 46 <b>COM:</b> N/A  <b>Carton:</b> 26L x 26W x 12H <b>Cube:</b> 4.69 <b>Options:</b> CG50, SW70  <b>Features:</b> 1, 3, 4 <b>Control:</b> Pneumatic Height  <b>Notes:</b>  <b>GREENGUARD Indoor Air Quality Certified®</b></p>	<p><b>Fabric</b></p> <p>-231 Black Icon</p>	<p><b>List Price</b></p> <p>310.00</p>
	<p><b>V4410</b> Deluxe Sled Base Arm Chair with Designer Plastic Shell Back and Black Steel Frame</p> <p><b>Overall Size:</b> 23W x 24D x 32H  <b>Seat:</b> 19W x 18D x 3.5T <b>Back:</b> 18.5W x 14.5H x 2.5T <b>Seat Range:</b> 18.5 Fixed  <b>Arms to Floor:</b> 24.5 <b>Weight:</b> 27 <b>UPS Weight:</b> 40 <b>COM:</b> 0.8 yds  <b>Carton:</b> 32L x 22W x 10H <b>Cube:</b> 4.07 <b>Options:</b> N/A  <b>Features:</b> N/A <b>Control:</b> N/A  <b>Notes:</b> Non Stacking  <b>GREENGUARD Indoor Air Quality Certified®</b></p>	<p><b>Fabric</b></p> <p>-231 Black Icon</p>	<p><b>List Price</b></p> <p>220.00</p>

◆ Denotes General Chair Warranty

# Price List WorkSmart Seating



**V4420** Deluxe Sled Base Chair with Designer Plastic Shell Back and Black Steel Frame  
**Overall Size:** 23W x 24D x 32H  
**Seat:** 19W x 19.5D x 3.5T **Back:** 18.5W x 14.5H x 2.5T **Seat Range:** 18.5 Fixed  
**Arms to Floor:** N/A **Weight:** 25 **UPS Weight:** 40 **COM:** 0.8 yds  
**Carton:** 32L x 22W x 10H **Cube:** 4.07 **Options:** N/A  
**Features:** N/A **Control:** N/A  
**Notes:** Non Stacking  
**GREENGUARD Indoor Air Quality Certified®**

Fabric	List Price
-231 Black Icon	190.00
IN	



**EM50727** Screen Back Task Chair with Adjustable Arms and Dual Wheel Carpet Casters  
**Overall Size:** 25.5W x 23D x 41H  
**Seat:** 19W x 19D x 2.5T **Back:** 17.25W x 20H **Seat Range:** 17 -21.5  
**Arms to Floor:** 25 **Weight:** 35 **UPS Weight:** 44 **COM:** .5 yds  
**Carton:** 25L x 24W x 13H **Cube:** 4.51 **Options:** CG50, SW70  
**Features:** 1, 4, 5, 8, 9 **Control:** Locking Tilt Control  
**Notes:**

Fabric	List Price
-3 Black	280.00
NEW	
IN	



**EM51022N** Screen Back Task Chair with "T" Arms and Dual Wheel Carpet Casters  
**Overall Size:** 24.5W x 23D x 40.5H  
**Seat:** 20W x 19D x 2.5T **Back:** 18.5W x 18.5H **Seat Range:** 17.75 -22.25  
**Arms to Floor:** 24.5 **Weight:** 30 **UPS Weight:** 44 **COM:** .5 yds  
**Carton:** 25L x 24W x 13H **Cube:** 4.51 **Options:** CG50, SW70  
**Features:** 1, 4, 5, 8, 9 **Control:** Locking Tilt Control  
**Notes:** Replaces 47903A

Fabric	List Price
-3 Black	250.00
IN	



**583713** Screen Back Chair with Black Mesh Seat, Titanium Finish Base, Adjustable Lumbar and Height Adjustable Arms  
**Overall Size:** 28W x 23D x 45.5H  
**Seat:** 22W x 19.5D x 3T **Back:** 21W x 26H **Seat Range:** 18.25 -22.75  
**Arms to Floor:** 26.25 **Weight:** 42 **UPS Weight:** 46 **COM:** N/A  
**Carton:** 30L x 25W x 11H **Cube:** 4.77 **Options:** CG50, SW70  
**Features:** 1, 4, 5, 8, 9 **Control:** Locking Tilt  
**Notes:** Dual Wheel Carpet Casters

Fabric	List Price
Black Mesh Only	275.00
IN	



**583814** Screen Back Chair with Black Leather Seat, Chrome Finish Base, Adjustable Lumbar and Height Adjustable Arms  
**Overall Size:** 28W x 23D x 45.5H  
**Seat:** 22W x 19.5D x 3T **Back:** 21W x 26H **Seat Range:** 18.25 -22.75  
**Arms to Floor:** 26.25 **Weight:** 42 **UPS Weight:** 46 **COM:** N/A  
**Carton:** 30L x 25W x 11H **Cube:** 4.77 **Options:** CG50, SW70  
**Features:** 1, 4, 5, 8, 9 **Control:** Locking Tilt  
**Notes:** Dual Wheel Carpet Casters

Fabric	List Price
Black Leather Only	300.00
IN	



**599302** Woven Mesh Back Chair with Black Mesh or Custom Fabric Seat, Height Adjustable Arms, Adjustable Lumbar and Nylon Base  
**Overall Size:** 25.75W x 23.25D x 44H  
**Seat:** 19.25W x 19.5D x 3T **Back:** 20.25W x 22.5H **Seat Range:** 18 -22.5  
**Arms to Floor:** 25.25 **Weight:** 37 **UPS Weight:** 37 **COM:** .5 yds  
**Carton:** 26L x 23W x 11H **Cube:** 3.81 **Options:** CG50, SW70  
**Features:** 1, 4, 5, 8, 9 **Control:** Locking Tilt  
**Notes:** Dual Wheel Carpet Casters

Fabric	List Price
Black Mesh	290.00
IN	

◆ Denotes General Chair Warranty



IN In Stock LT Lead Time - Transit from CA SO Special Order

Office Star Products • www.officestar.net • 800.950.7262

# Price List WorkSmart Seating



**599402** Woven Mesh Back Chair with Black Leather Seat, Height Adjustable Arms, Adjustable Lumbar and Nylon Base

**Overall Size:** 25.75W x 23.25D x 44H

**Seat:** 19.25W x 19.5D x 3T **Back:** 20.25W x 22.5H **Seat Range:** 18 -22.5

**Arms to Floor:** 25.25 **Weight:** 37 **UPS Weight:** 37 **COM:** N/A

**Carton:** 26L x 23W x 11H **Cube:** 3.81 **Options:** CG50, SW70

**Features:** 1, 4, 5, 8, 9 **Control:** Locking Tilt

**Notes:** Dual Wheel Carpet Casters

Fabric	List Price
Black Leather Only	310.00
IN	



**183305** Screen Back Visitors Chair with Black Mesh Seat, Black Frame and Arms

**Overall Size:** 24W x 23.5D x 32.75H

**Seat:** 18.5W x 19.5D x 3.75T **Back:** 17.25W x 14.5H **Seat Range:** 18.5 Fixed

**Arms to Floor:** 25.75 **Weight:** 25 **UPS Weight:** 41 **COM:** N/A

**Carton:** 25L x 21W x 14H **Cube:** 4.25 **Options:** N/A

**Features:** N/A **Control:** N/A

**Notes:**

Fabric	List Price
Black Mesh	225.00
IN	

◆ Denotes General Chair Warranty

# Price List Resin Chairs



**PC02** Resin Chair (4 Pack Blow Mold)

**Overall Size:** 18.5W x 21.9D x 33.2H **Pack:** 4pc

**Leg Tube:** 1.125" x 1.1mm **Table Top:** N/A **Weight:** 51 (4 pack)

**Carton:** 44L x 19W x 12H **UPS Weight:** 56 **Cube:** 5.81

**Notes:** See Caddies on Page 64

Shipping	List Price
UPSable	288.00
IN	4 Pack 72.00 ea.



**PC54** Plastic Chair (4 pack)

**Overall Size:** 17.75W x 17.5D x 34.5H **Pack:** 4pc

**Leg Tube:** 0.75" x 0.85mm **Table Top:** N/A **Weight:** 28

**Carton:** 42L x 18W x 18H **UPS Weight:** 76 **Cube:** 7.88

**Notes:** See Caddies on Page 64

Shipping	List Price
UPSable	168.00
IN	4 Pack 42.00 ea.

# Price List Resin Tables



**BT04Q** 4' Resin Multi Purpose Table  
**Overall Size:** 48W x 24D x 29.25H **Pack:** 1pc  
**Leg Tube:** 1" x 0.8mm **Table Top:** 45mm Thick **Weight:** 21  
**Carton:** 49L x 25W x 3T **UPS Weight:** 21 **Cube:** 2.13  
**Notes:**

Shipping	List Price
UPSable	118.00
<b>IN</b>	



**BT05Q** 5' Resin Multi Purpose Table  
**Overall Size:** 60W x 30D x 29.25H **Pack:** 1pc  
**Leg Tube:** 1.125" x 0.9mm **Table Top:** 45mm Thick **Weight:** 30  
**Carton:** 61L x 31W x 3T **UPS Weight:** 32 **Cube:** 3.28  
**Notes:** See Caddies on Page 64

Shipping	List Price
UPS Large Package	150.00
<b>IN</b>	



**BT06Q** 6' Resin Multi Purpose Table  
**Overall Size:** 72W x 30D x 29.25H **Pack:** 1pc  
**Leg Tube:** 1.125" x 1.0mm **Table Top:** 45mm Thick **Weight:** 34  
**Carton:** 73L x 31W x 3H **UPS Weight:** 38 **Cube:** 3.93  
**Notes:** See Caddies on Page 64

Shipping	List Price
UPSable Large Package	165.00
<b>IN</b>	



**BT6FQ** 6' Resin Center Fold Multi Purpose Table  
**Overall Size:** 72W x 30D x 29.25H **Pack:** 1pc  
**Leg Tube:** 1.125" x 0.9mm **Table Top:** 45mm Thick **Weight:** 34  
**Carton:** 38L x 30W x 4H **UPS Weight:** 34 **Cube:** 2.64  
**Notes:**

Shipping	List Price
UPSable	180.00
<b>IN</b>	



**BT08Q** 8' Resin Multi Purpose Table  
**Overall Size:** 96W x 30D x 29.25H **Pack:** 1pc  
**Leg Tube:** 1.125" x 1.0mm **Table Top:** 50mm Thick **Weight:** 49  
**Carton:** 98L x 31W x 3H **UPS Weight:** Non UPSable **Cube:** 5.27  
**Notes:** See Caddies on Page 64

Shipping	List Price
Non UPSable	242.00
<b>IN</b>	



**BT48Q** 48" Round Resin Multi Purpose Table  
**Overall Size:** 48W x 48D x 29.25H **Pack:** 1pc  
**Leg Tube:** 31.125" x 1.0mm **Table Top:** 45mm Thick **Weight:** 32  
**Carton:** 49L x 49W x 3H **UPS Weight:** 41 **Cube:** 4.17  
**Notes:** See Caddies on Page 64

Shipping	List Price
UPSable Large Package	195.00
<b>IN</b>	



**BT48F** 48" Round Fold in Half Resin Multi Purpose Table  
**Overall Size:** 48W x 48D x 29.25H **Pack:** 1pc  
**Leg Tube:** 1.125" x 1.0mm **Table Top:** 45mm Thick **Weight:** 40  
**Carton:** 49L x 26W x 5H **UPS Weight:** 40 **Cube:** 3.68

**NEW**

Shipping	List Price
UPSable Large Package	218.00
<b>IN</b>	



**BT60Q** 60" Round Resin Multi Purpose Table  
**Overall Size:** 60W x 60D x 29.25H **Pack:** 1pc  
**Leg Tube:** 1.25" x 1.0mm **Table Top:** 50mm Thick **Weight:** 49  
**Carton:** 62L x 62W x 3H **UPS Weight:** Non UPSable **Cube:** 6.67  
**Notes:** See Caddies on Page 64

Shipping	List Price
Non UPSable	310.00
<b>IN</b>	



**BT71** 71" Round Resin Multi Purpose Table  
**Overall Size:** 71W x 71D x 29.25H **Pack:** 1pc  
**Leg Tube:** 1.5" x 1.0mm **Table Top:** 55mm Thick **Weight:** 63  
**Carton:** 72L x 72W x 3H **UPS Weight:** Non UPSable **Cube:** 9.0  
**Notes:** See Caddies on Page 64

Shipping	List Price
Non UPSable	420.00
<b>IN</b>	











## Office Star Products

P. O. Box 3520, Ontario, CA 91761  
909.930.2000 800.950.7262 outside CA  
f: 909.930.5349 [www.officestar.net](http://www.officestar.net)



Corporate Office  
& Warehouse

850 Aquila Way, Suite 110  
Austell, GA 30168

Atlanta  
Distribution Center